

# the scroll

OF PHI DELTA THETA

SUMMER  
SUPPLEMENT  
1984

## Jon McBride To Pilot Columbia Space Shuttle

In late August Jon McBride (West Virginia '64) will become the third Phi Delt astronaut in space when he joins the crew of the next Columbia Space Shuttle flight from the Kennedy Space Center in Florida.

The rest of the flight crew consists of Bob Crippen, Sally Ride, Kathy Sullivan and Dave Leestma. They are scheduled to be in space for 10 days.

The mission includes deployment of the Earth Radiation Budget Satellite (ERBS); on-board experiments including SPARX, OSTA-3, LFC, and IMAX and extra-vehicular activities which will verify procedures to be used with the Orbital Refueling System.

"I would like to extend an overall *Scroll* invitation to my Brothers to attend the launch," said McBride, who will serve as pilot on the flight. The current launch date is Aug. 30, but the final launch date is always subject to change.

Approximately two weeks prior to launch, recorded information will be available at the following numbers: Washington, D.C. (202-755-8363), Kennedy Space Center, FL (305-453-7730), Marshall Space Flight Center, AL (205-453-2222), Johnson Space Center, TX (713-483-2477) and Dryden Flight Research Facility, CA (805-945-6776).

McBride follows Neil Armstrong (Purdue '55), the first man to step foot on the Moon, July 20, 1969, and Dr. F. Story Musgrave (Syracuse '58), who was a member of the crew that felt the first flight of the space shuttle Challenger, on April 4, 1983, as Phi astronauts.

Born in Charleston, West Virginia, McBride considers Beckley, West Virginia, to be his hometown. He attended West Virginia where he pledged and was initiated but graduated from the U.S. Naval Postgraduate School in 1971 with a bachelor of science degree in aeronautical engineering. He also did graduate work in human resources management at Pepperdine University.

Commander McBride's naval service began in 1965 with flight training at Pensacola, FL. After winning his wings as a naval aviator, he was assigned to Fighter Squadron 101 based at Naval Air Station Oceana, VA, for training in the F-4 "Phantom II" aircraft.

He was subsequently assigned to Fighter Squadron 41 where he served three years as a fighter pilot and division officer. He has also served tours with Fighter Squadrons

11 and 103. While deployed to Southeast Asia, McBride flew 64 combat missions.

He attended the U.S. Air Force Test Pilot School at Edwards Air Force Base prior to reporting to Air Test and Development Squadron Four

at Point Mugu, CA, where he served as maintenance officer and Sidewinder project officer. He has flown 40 different types of military and civilian aircraft and piloted the Navy "Spirit of 76" bicentennial-painted F-4J "Phantom" in various air

shows during 1976, 1977 and 1978. He holds current FAA ratings which include commercial pilot (multi-engine), instrument, and glider; and he previously served as a certified flight instructor.

The astronaut has logged more than 3,800 hours flying time—including 3,300 hours in jet aircraft.

He was selected as an astronaut candidate by NASA in January, 1978. In August 1979, he completed a one-year training and evaluation period, making him eligible for assignment as a pilot on future Space Shuttle flight crews.

Commander McBride's NASA assignments have included lead chase pilot for the maiden voyage of "Columbia"; software verification in the Shuttle Avionics Integration Laboratory; and capsule communicator for STS-5 and STS-6.

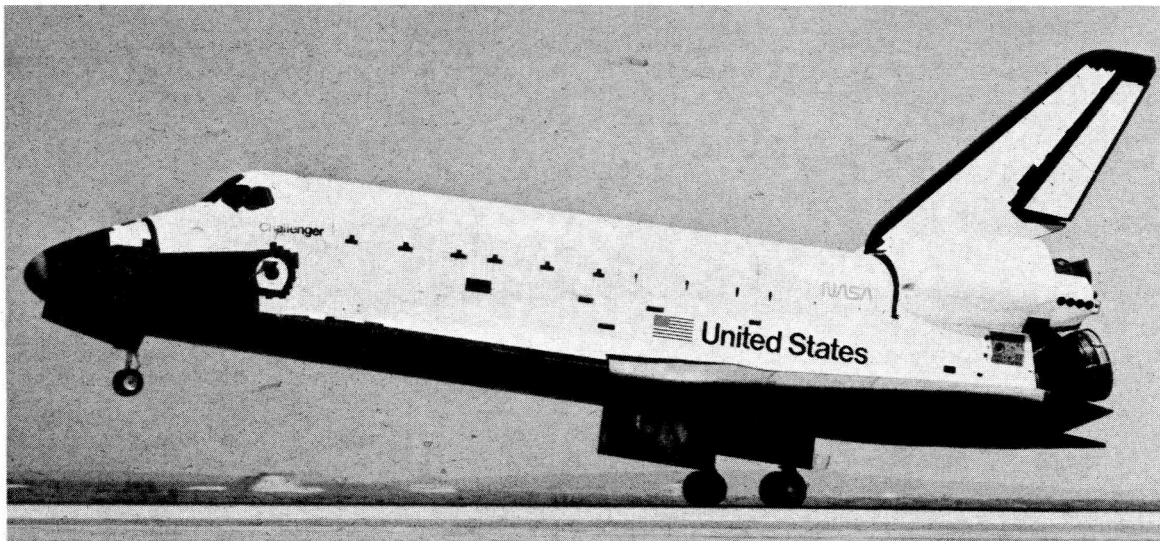
He has been awarded three air medals, the Navy Commendation Medal with Combat V, a Navy Unit Commendation, the National Defense Medal, and the Vietnamese Service Medal; recipient of West Virginia Secretary of State's "State Medallion" and appointed "West Virginia Ambassador of Good Will Among All Men" in 1980.

McBride is a member of the Association of Naval Aviation, the Tailhook Association, and the American Legion and he is an associate member of the Society of Experimental Test Pilots.

He is married to the former Brenda Lou Stewart of Mobile, AL and they have three children, Richard, Melissa and Jon.



COMMANDER JON MCBRIDE



SPACE SHUTTLE CHALLENGER

Vol. 107, No. 4 Summer, 1984

Editor: Bill Dean

Business Manager:  
Robert J. Miller

Editorial Assistant:  
Mrs. Blanche Stelle

Sports Editor:  
Dr. John Davis, Jr.

The Scroll (ISSN 0036-9799) is an educational journal published continuously by the Phi Delta Theta Fraternity® since 1878 as its official organ. It is now published five times a year (Fall, Winter, Spring, Summer, Summer Supplement) at Long Prairie, Minnesota. Subscription Rates: for life \$25.00 (included in initiation fee); Annual \$4.00; Single Number, \$1. Second class postage paid at Oxford, Ohio, and at additional mailing offices. Please send form 3579 for undeliverable copies to Phi Delta Theta Fraternity®, 2 South Campus Ave., P.O. Box 151, Oxford, Ohio 45056. Printed in U.S.A.

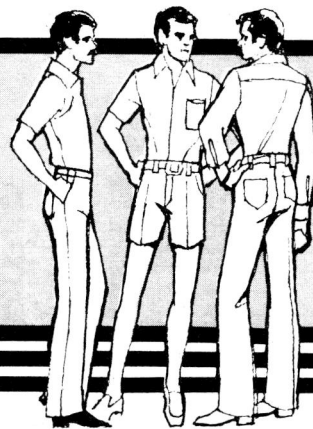
©Copyright 1984 by Phi Delta Theta Fraternity.® All rights reserved. Nothing herein may be reproduced without the express written permission of Phi Delta Theta Fraternity.

Members College Fraternity  
Editor's Association





# News from the CHAPTERS



NOTE: Chapter newsletters are arranged in alphabetical order by state. All Canadian newsletters are grouped together. Newsletters will be printed once a year in the Summer Supplement to The Scroll. Deadline is May 1, 1985 for next year. Only newsletters that are (1) typed, (2) double-spaced, (3) signed, (4) confined to 250 words and (5) submitted by deadline time will be used.

The names of rush chairmen are listed if known. Recommendations should be sent to the rush chairman if listed or to the chapter address in care of the rush chairman.

## CANADA DALHOUSIE UNIVERSITY

Nova Scotia Alpha (1930), 1378 Seymour St., Halifax, N.S., CN B3H 3M5. Chapter Adviser - T. Scott Fowler, 8 Arlington Ave., Halifax, NS, CN B3N 1Z6. Rush Chairman - Jeff Morris, Box 581, Port Hawkesbury, NS B0E 2V0.

## McGILL UNIVERSITY

Quebec Alpha (1902), 3647 University St., Montreal, QU, CN H3A 2B3. Chapter Adviser - Wesley H. Miyamoto, 2125 St. Marc, Apt. #212, Montreal, QU, CN H3H 2P1. Rush Chairman - John Blais, 3647 University, Montreal, QU, CN H3A 2B3.

## UNIVERSITY OF ALBERTA

Alberta Alpha (1930), 10942 87th Ave., Edmonton, AB, CN T6G 0X3. Chapter Adviser - Don Matheson, 10324 Villa Ave., Edmonton, AB, CN T5N 3T9. Rush Chairman - Geoff Boulter, 210 Greystone Terrace, Sherwood Park, Alberta, CN T8A 3E8.

Alberta Alpha had a very successful past year in many ways. Participation in campus, intrafraternity, and community affairs assured Phi Delta Theta a continued good reputation. Many hours of community service were donated, including the A.C.T. Telethon.

Ten men were shown the benefits of becoming a Phi by Rush co-chairman, **Bob Sprague** and **Eric Andersen's** excellent rush program. All ten initiated while there are five Phikeias from a record spring rush still to be initiated this April.

The new actives are doubly appreciated for many of our actives are graduating this year. The calibre of our new alumni is shown by the fact they are landing jobs in these economic times.

In a hard fought election one of our actives, **Paul Alpern**, beat out eleven other candidates to become Vice-President (External) of the Student's Union here at the University of Alberta. In addition **Arleigh Marquis** was elected vice-president of the Inter-Fraternity Council on campus.

This past year was a year of triumphs in sports for Alberta Alpha. Some of the highlights include the intramural football crown, victory in the Delta Gamma Anchor Splash (with the help of our ace swimmer **Shawn Marquis**), and high finishes in everything from ice hockey to snooker. Our emphasis on participation earned us a place in the top intramural division next year.

Another successful Founder's Day weekend was held, with over 80 Phi Deltas present for the Friday night stag, including our veteran Chapter Adviser, **Don Matheson**.

A program in which alumni are invited to give a talk over dinner every month was initiated by outgoing President **Barry Grabowski**. The trial run was a success.

The end of the school year leaves several things to look forward to in the summer: The Klondike Days raft and the New Orleans convention.—**Peter Bailey**

## UNIVERSITY OF BRITISH COLUMBIA

British Columbia Alpha (1930), 5740 Toronto Rd., Vancouver, BC, CN V6T 1L2. Chapter Adviser - R. Scott Bannatyne, 965 W. 15th Ave., Vancouver, BC, CN V5Z 1S1. Rush Chairman - Doug Little, 4012 Delbrook Ave., N. Vancouver, BC, CN V7N 3Z8.

## UNIVERSITY OF MANITOBA

Manitoba Alpha (1930), 548 Stradbrook, Winnipeg, MB, CN R3L 0J9. Chapter Adviser - David A. Johnston, Jr., Suite 200, 213 Notre Dame Ave., Winnipeg, MB, CN R3B 1N3. Rush Chairman - Dave MacKay, 83 Woodgreen Place, Winnipeg, MB, CN R3J 1H4.

During the past year our members have strived in all ways to produce the teachings of Phi Delta Theta.



NOVA SCOTIA ALPHA: Nova Scotia Alpha's annual Christmas party attracted one of its largest turnouts this past December.

In the fall a successful rush was organized and spearheaded by **Dave MacKay** with such recruiting events as the alumni smoker. The efforts of all the actives and various alumni, particularly **Tom Beech** and **Bob Montgomery**, culminated in the initiation of ten new men into Phi Delta Theta. They are: **Dave Dalgleish**, **Sean Kavanagh**, **Glen Komishon**, **Ted Kushak**, **Anthony MacPherson**, **Jeff Murray**, **Mike Nesbitt**, **Tony Shay**, **Bob Turner** and **Al Wallace**.

The rest of the year was devoted to a full academic and social schedule. Strides were made in both areas by all, most noticeably, **Sandy Turner**, our newly elected vice president. Other members currently holding office include: **Bill MacMillan**-Treasurer, **Gary Bergal**-Warden, **Dave Delgleish**-Housemanager, **Dave MacKay**-Rush Chairman, **Quentin MacCharles**-Social Chairman, and **Kris Guttormsson**-Steward.

On the sport front, our intramural hockey team finished high in the year's standings, reaching the semi-finals before elimination. Not to be outdone by those on ice, **Dave Delgleish** turned in strong performances as an anchor of the University of Manitoba Swim Team.

Events such as these and the Orphan's Christmas Social organized with the help of the ladies from Alpha Gamma Delta and our continued support of the Lion's Telethon, made it a memorable year.—**Anthony MacPherson**

## UNIVERSITY OF TORONTO

Ontario Alpha (1906), 165 St. George St., Toronto, ON, CN M5R 2M2. Chapter Adviser - Allan W. Paul, 470 Melita Crescent, Apt. 5A5, Toronto, ON, CN M6G 3Y1. Rush Chairman - Jerry Ho, 1334 Woodbine Ave., Toronto, ON, CN M4C 4G2.

The school year for Ontario Alpha began, once again, with a successful retreat at a brother's cottage, on Labour Day Weekend.

After four years with two different temporary chapter advisers, the chapter made a concerted effort in the summer to find a permanent adviser. We are pleased to announce that Brother **Allan Paul** from Manitoba Alpha is our new chapter adviser. We would like to thank **Allan** for all of his dedication this last year; we could not have found anyone better.

Another major accomplishment for the chapter this year was the communication

and program established with the A.L.S. chapter in Toronto. June 1st has officially been proclaimed, by city council, A.L.S. day in Toronto and the chapter will be out raising funds: the focus will be the Toronto Blue Jay game where the fourth annual Iron Man Award will be presented by the A.L.S. society to a Blue Jay.

The chapter ran two pledge classes this year, initiating five in the fall and four once again in the spring class.

A number of traditions were continued this year including full participation in Greek or Fraternity Week, a Halloween social, and Alumni social, a formal black tie Founder's Day, a formal dinner-dance, and intramural broomball with Alpha Gamma Delta. Once again visitations played a major role in our activities, including our annual trip to Buffalo for a Monday Night football game. We would like to thank all of the host chapters for their hospitality, we'll be back, no doubt.

Hopefully a new tradition was initiated in September as the first annual active-alumni golf tournament was played, won by an active.

House renovations also continued with the plumbing and wiring being the two main priorities; money from the Palmer Foundation still plays a prominent role.

Next year's executive has been elected and plans for summer house, the retreat and rush are well underway as we look forward to June 1st.—**Paul Oakley**

## UNIVERSITY OF WESTERN ONTARIO

Ontario Beta (1984), 638 Talbot St., London, ON, CN N6A 2T5. Chapter Adviser - George Clark, News Producer CFPL Television, 1 Communications Rd., London, ON, CN N6A 4H9. Rush Chairman - Scott Davidson, 638 Talbot St., London, ON, CN N6A 2T5.

## ALABAMA AUBURN UNIVERSITY

Alabama Beta (1879), 215 S. College St., Auburn, AL 36830. Rush Chairman - Ken Stroecker, 665 Ynestra Dr., Mobile, AL 36609.

## UNIVERSITY OF ALABAMA

Alabama Alpha (1877), Drawer AX, University, AL 35486. Chapter Adviser - Phillip Weaver, 308 31st Ave. E., Tuscaloosa, AL 35401. Rush Chairman - David Benet/ Bob Carr, Drawer AX, University, AL 35486.

The 1983-84 school year reflected the continued involvement of Alabama Alpha actives both in activities connected with the fraternity and schoolwide events.

Newly elected President **Winston McCalley** and **Robert Field** were chosen for the Greek honorary Order of Omega. Treasurer **Jake Branstion** served as executive assistant on the Interfraternity Council. **Govan White** was chosen for The Jaxons, an honorary for senior class leaders. Also, **Robert Carr** was chosen to serve on the University Disciplinary Committee.

Once again, Alabama Alpha was in intense competition for the All Campus Intramural Championship. Overall Alabama Alpha finished third in intramural competition. Division winners included **Winston McCalley** and **Brooks Sudduth** in golf and **Dean Matthews** and **Marty Shaw** in Bowling.

In community service, Alabama Alpha conducted programs that included such activities as a campus clean-up day, a health and safety fair for fraternity and sorority house cooks, and a blood drive in conjunction with the Student Government Association's annual blood drive.

We would like to give special thanks to our House Corporation and our Alumni for all their support and to our chapter adviser, **Phillip Weaver**.—**Ken Johnson**

## ARIZONA ARIZONA STATE UNIVERSITY

Arizona Beta (1958), 701 Alpha Drive, Tempe, AZ 85281. Chapter Adviser - Gilbert F. Greulich, 6144 Fanfol Dr., Scottsdale, AZ 85253. Rush Chairman - Chris Kimble, 701 Alpha Drive, Tempe, AZ 85281.

## UNIVERSITY OF ARIZONA

Arizona Alpha (1922), 1745 E. 2nd St., Tucson, AZ 85719. Chapter Adviser - George Grady, 6612 N. Casas Adobes Dr., Tucson, AZ 85704. Rush Chairman - Paul Trippett, 1745 E. 2nd St., Tucson, AZ 85719.

The 1983-84 school year reflected Arizona Alphas continued involvement in all aspects of University life.

Phi Deltas were very busy in many different campus activities. **Mike Dunitz** and **Jerry Anthony** were both involved in university drama productions. **Rob LeMarr** was elected vice-president of the IFC. **Thomas Lowry** and **Brian Smith** were both on the U of A Greek Times newspaper staff. **Mark Munhall** was the executive

director of the 1984 Spring Fling, the largest student run carnival in the country. Many other Phis were on various Spring Fling staffs. We were one of the few chapters sending three delegates (**Jeff Jamison**, **John Quiroz**, **Scott Cain**) to our Tri-Prov. held at University of California at Davis. **Bob Baer** was involved in the Associated Students Office. He was co-editor of the student handbook and co-chairman of the annual Parent's Day program.

Our fall pledge class volunteered work at the Rincon Optimists Air Show. The chapter also did work as volunteers for the Reach Out Crisis Center. We also set up and took down gym equipment for all of the U of A's gymnastic meets. Once again, the Phi Deltas were strong on all fronts athletically. Both the "A" and "B" football teams made postseason playoffs. The "A" team defeated the eventual all-campus champions in the regular season. We also had a strong showing at the annual DG Anchor Splash. The Phi Delt "B" softball team also made the playoffs before finally being ousted.

All in all it was an outstanding year for Arizona Alpha. We would also like to thank our Housemother, Sue Jamison, for all of her valuable time and support throughout the year. The brothers are anxiously awaiting the fall semester to continue showing the strength and pride of Phi Delta Theta.—**Bob Baer**

## ARKANSAS UNIVERSITY OF ARKANSAS

Arkansas Alpha (1948), 108 Stadium, Fayetteville, AR 72701. Chapter Adviser - James D. Selman, 137 San Jose, Springdale, AR 72764. Rush Chairman - Rick Fielder, 2905 Justin Matthews, North Little Rock, AR 72116.

Arkansas Alpha had a successful year during 1983-84 in the areas of membership, scholarship, campus involvement and most importantly community service. Consistent growth and strong chapter leadership has enabled Arkansas Alpha to remain among the leaders at the University of Arkansas.

On Jan. 26, 1984, 32 men were initiated into the brotherhood of Phi Delta Theta. They were as follows: **Lynn Angeletti**, **Robert James**, **John Meggers**, **G. W. Sorrells**, **West Memphis**; **Lad Brooks**, **Batesville**; **Mark Campbell**, **Newport**; **Eddie Cooper**, **Tim Nix**, **Charles Gairhan**, **Jonesboro**; **Skipper Davis**, **Nashville**; **Gregg Gordon**, **Hot Springs**, **George Hays**, **Steve Jones**, **Robert Moseley**, **Little Rock**; **Chuck Herlein**, **Helena**; **Bill Holt**, **Pine Bluff**; **Greg Horne**, **Russellville**; **Jimmy Keith**, **Paragould**; **Scott Kearney**, **Rogers**; **Whit Knapple**, **Fisher**; **Fred Muse**, **Matt Stovall**, **North Little Rock**; **Keith Noble**, **Tim Pearce**, **Morrilton**; **Gary Norcross**, **Tyronza**; **Billy Priokos**, **Fort Smith**; **Al Thomas**, **Clarksdale**; **Tom Young**, **West Helena**; **Gary Wilks**, **Stuttgart**; **Clay Whitney**, **Decatur, IL**; **Richard Rieves**, **Ellendale, TN**; **Max Reddick**, **Monroe, LA**. This brings our total number of initiates to 979.

Following initiation of these men, a spring pledge class of 13 men were formally pledged. They are as follows: **Jed Meeks**, **Crawfordsville**; **Greg Wingfield**, **Steven Schmidt**, **Camden**; **Mike Munson**, **Rogers**; **Tim White**, **Tulsa, OK**; **Joe Jones**, **Proctor**; **Brad Lorince**, **Stuttgart**; **Butch Weatherly**, **Fayetteville**; **Vic Couples**, **Hughes**; **Paul Spikes**, **Pine Bluff**; **Garland Bond**, **Spring, TX**; **John McSwain**, **Fort Smith**; **Scott Sudbury**, **Starksville, MS**.

Arkansas Alpha excelled in scholarship this past year. Brothers **Don McKnight**, **Joe Williams**, and **Greg Whiteaker** were selected to the Phi Beta Kappa Honor Society. **Don Parker**, **Lance Fair** were selected to Omicron Delta Kappa. **Steve Jones**, **Chuck Gairhan**, **Doug Bernard**, **Whit Knapple** to Phi Eta Sigma.

Campus leadership is always a strong tradition at Arkansas Alpha. Brothers **Greg Giles**, **Greg Whiteaker**, and **Joe Williams** were honored as National Who's Who among American College Students. **Don Parker** and **Lance Fair** were selected to Order of Omega. Brothers **Charles Gairhan**, **Lad Brooks**, and **Tom Pearce** were chosen for Cardinal XXX.

Brother **Whit Knapple** was selected Model Pledge for our campus.

Community service still remains a prime endeavor of our chapter. Our year's work in this area was highlighted by two events. The first one was our annual "High Rollers" Casino Social to benefit the Muscular Dystrophy Association. This event, sponsored for parents and alumni, raised over \$3100. Our second project was also to benefit the Muscular Dystrophy Association. The event, called "Quarter Mile of Quarters," was able to raise over \$1,500, and was highlighted by special help from the National Muscular Dystrophy Poster Child.

Other community service projects



included the Special Olympics, CARE, collecting for UNICEF, Fayetteville Park Clean-ups, and the Salvation Army Christmas Drive.

Our hard work in community service this year earned Arkansas Alpha First place in Community Service work.

Arkansas Alpha Phis were again successful in sweeping the intramural tennis competition. Also, **Mark Lee**, linebacker for the University of Arkansas football team, was named to the first team *All-Phi* defense, and **Greg House**, starting punter and place kicker, was named to the All-Phikeia team.

The new major officers for next fall are: President **Don Parker**, Vice President **Rick Coleman**, Treasurer, **Alan Cline**, Secretary **Tim Pearce**.—Greg Giles

### CALIFORNIA CALIFORNIA STATE UNIVERSITY

California Zeta (1966), 17740 Halsted St., Northridge, CA 91325. Chapter Adviser - Stanley W. Gilson, 6628 Woodlake Ave., Canoga Park, CA 91307. Rush Chairman -Joe Miller, 17740 Halsted St., Northridge, CA 91325.

California Zeta began the Fall semester by installing 22 fine men to the Alpha Chi pledge class, being the second largest fall pledge class in Cal Zeta history. This fall rush was extremely successful and a lot of fun.

Athletically this semester the chapter has one main goal—the All University Trophy. This trophy is given to that fraternity on campus that (on the average) places the highest in all the intramural sports activities. Overall, Cal Zeta is looking very good. In team sports, Cal Zeta took first place in softball and second place in track and field, and are undefeated in Basketball. In individual sports, the Phi Deltas at C.S.U.N. are very dominating. Thanks to Brothers **Howard Burd**, **Steve Ingie**, **Steve Mathews**, **Kenny Hussain** and **Alan Grider**, Cal Zeta took All-University in One on One Basketball, Singles Tennis, Bowling, and Golf, respectively.

This year Cal Zeta has participated in 10 philanthropies and community services, attained the third highest GPA of all fraternities on campus, and is currently working on its eighth Gold Star.

After looking at the statistics, the Phi Deltas at California State University at Northridge are obviously a very dominating force, both athletically and scholastically.

There are some Brothers graduating at the end of this semester. We would like to honor them for their contributions to Phi Delta Theta: **Mike Tonery**, **Bob Bekian**, **Scott David**, **Tom Feddersen**, **Mike O'Keefe**, and **Chris Perry**. These brothers will be missed dearly, but the standards they have helped to establish at Cal Zeta will be upheld for many years to come.

### SAN JOSE STATE UNIVERSITY

California Iota (1978), 48 So. 7th St., San Jose, CA 95112. Chapter Adviser - Paul Parenti, 631 San Benito Ave., #B, Los Gatos, CA 95030.

The Cal Iota chapter held its Founder's Day celebration at the Los Gatos Lodge on March 22, 1984. One of the highlights of the evening was the initiation of **Harold Hutchinson** (Akron '32) and **Eugene L. Kreighbaum** (Akron '33) into the Golden Legion. In addition, we presented Foundation Awards to six alumni for their outstanding support and service. Those receiving awards were **Rick Deutsch**, **Don Dushane**, **Dennis Fernandez**, **Bill Gustafson**, **Dick Irion**, and **Bill Reagan**. Congratulations and thanks to all.

Chapter president **Richard "Chili-Mac" McNeese** announced during the evening that the Phi Deltas finished first in G.P.A. for the fall '83 semester. This makes six out of the last seven semesters that we've finished first among the 13 fraternities active at San Jose State. **Rich** also informed the alumni of our involvement with a local PBS station, KTEH in San Jose. Thirty brothers donated six hours each to KTEH's biannual fundraising drive; raising \$13,000.00—\$3,000.00 over their goal. The night provided both free publicity for the chapter and fun for the brothers. Plans are under way to make this an annual event.

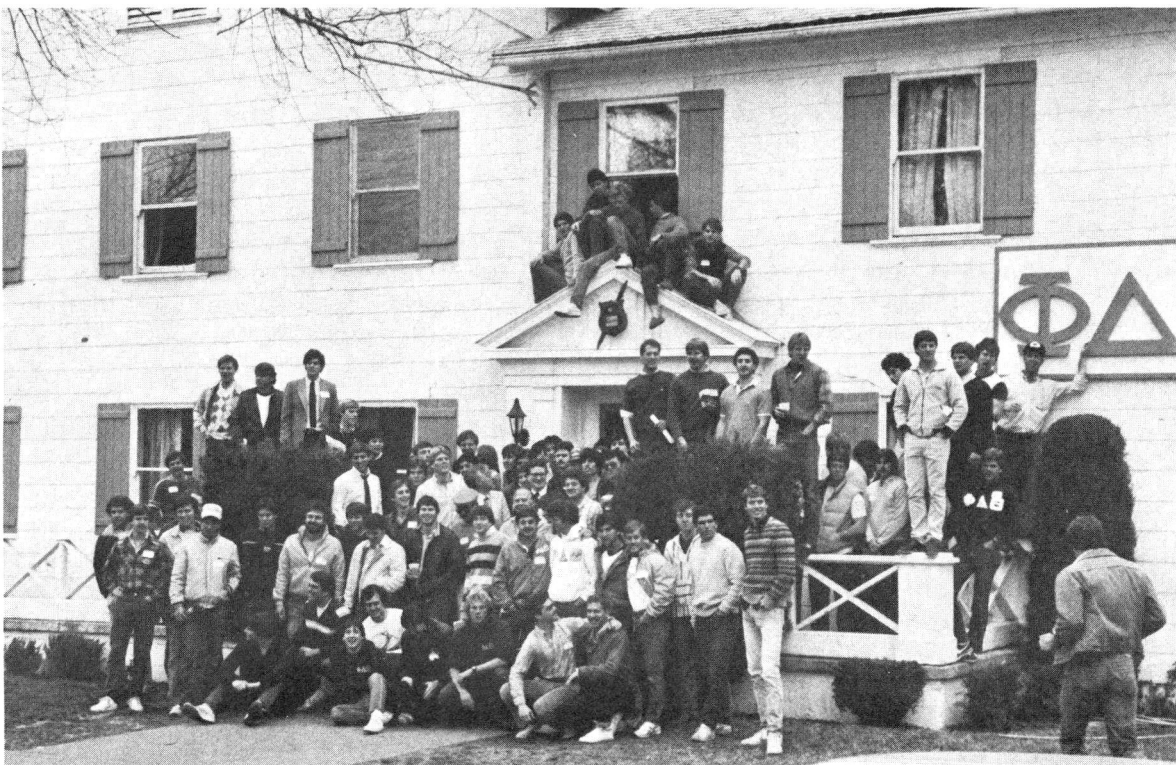
The chapter itself has been growing in numbers. We started the 1983-84 school year with 27 actives. Twelve more were initiated on Nov. 28, 1983. The spring 1984 pledge class, also 12 members strong, should put us at 45 to 50 actives after graduation. The first to be initiated from this Mu pledge class will be the 100th person initiated into Cal Iota, a milestone we're all proud of. After these Phikeias are initiated, we will welcome them into the chapter with our first ever spring pledge dance.

Last year's fundraiser netted over \$1,000.00 for A.L.S. We hope to double this year's donation.

In addition to the above accomplishments, the thing we are proudest of is that for the first time in our seven year history, we have been nominated for the Gold Star. We have all worked hard to get this far and the nomination has increased our spirit and dirve. We are going for the gold in 84!

### STANFORD UNIVERSITY

California Beta (1891), 680 Lomita Drive, Stanford, CA 94305. Chapter Adviser - Stephen T. Conley, Stony Ridge Ranch, R.2, Box 341, LaHonda, CA 94020. Rush Chairman - Mike Harrigan/Phil Rowley, 680 Lomita Drive, Stanford, CA 94305.



**TRI-PROVINCE:** California Epsilon hosted a tri-province meeting in 1983. Consultant Chris Schrader and GC President Charlie Wicks were both present.

The shared enthusiasm displayed by the latest group of initiates has been the basis for an outstanding year here at California Beta. All of our endeavors either within the chapter, the surrounding community, or within Stanford have proved quite successful.

The pledge program was a constructive and educational experience which truly turned the Phikeias into a cohesive group. Chapter house improvements added an extra degree of comfort to the already pleasant surroundings. Among these additions were: a lighted dart alley, a stereo, a permanent TV room, stools for the bar, and a rejuvenated sand volleyball court. These efforts to enhance the facilities of our chapter house paved the way for a well-organized, well-attended, and noteworthy rush. We are certain the new Phikeias will prove to be dependable brothers.

During the winter quarter, the Stanford Phi Deltas invited a number of elderly ladies and gentlemen over for dinner. The lively atmosphere provided a change of pace from their retirement home. The exchange of interesting conversation, soothing music, and hilarious skits made the evening enjoyable.

The Phis have also involved themselves in activities on campus. The highlight of the first annual Step Show was the appearance of the superbly choreographed Phis. The extraordinary athletic ability of our intramural team members culminated in strong showings in all sports, in particular volleyball, waterpolo, and basketball.

In conclusion, the Phi Delta Theta fraternity at Stanford University has displayed remarkable enthusiasm; life at the house has been a positive experience for all. Our seniors have secured challenging jobs; they have been accepted at top law, business, and medical schools, and we bid them success and luck in their journeys beyond the friendly confines of the campus.—**Edward C. Bendy**

### UNIVERSITY OF CALIFORNIA - BERKELEY

California Alpha (1873), 2726 Channing Way, Berkeley, CA 94704. Chapter Adviser - William K. Tuck, 401 Warren St., Redwood City, CA 94063. Rush Chairman - Greg C. Smith, 16272 Rascal Lane, Huntington Beach, CA 92649.

The spring semester was started off with a chapter retreat in the Berkeley hills. Problems were discussed and goals were set. The retreat proved to be quite helpful and will become an integral part of the beginning of each semester.

The chapter is currently undertaking two philanthropy projects. The brothers have been selling raffle tickets to benefit A.L.S. We have also adopted a local Jr. High school in Berkeley. The brothers help with tutoring, paperwork, and sports programs during and after the school day.

Our spring formal consisted of four hours of dancing and cruising around the San Francisco Bay on a charter boat. We were provided with a beautiful, clear night and the evening proved to be a big success.

The fall pledge class did quite well academically, obtaining the best grade point average on campus for pledge classes. The six spring pledges are hoping to sustain this number one ranking.

The chapter currently has three members on the track team, one on the lacrosse team, and several members on the varsity football team including **Eddie Walsh**, who was recently voted a member of the *All-Phi* Football Team.

Finally, to end a newsletter full of good news with perhaps the best news of all; we recently received news that Cal Alpha is eligible for a Gold Star Award just fifteen months after regaining our charter.—**Brian Dowd**

### UNIVERSITY OF CALIFORNIA - DAVIS

California Epsilon (1954), 336 "C" St., Davis, CA 95616. Chapter Adviser -Robert F. Ingels, 1905 Rolls Way, Carmichael, CA 95608. Rush Chairman - Craig Bassel, 2675

Tangldais, El Cerrito, CA 94530.

### UNIVERSITY OF CALIFORNIA - IRVINE

California Theta (1975), P.O. Box 4076, Irvine, CA 92716. Chapter Adviser -David Davidson, 23232 Tasmania Circle, S. Laguna, CA 92677. Rush Chairman - Steve Bernard, P.O. Box 4076, Irvine, CA 92716.

The past year has brought continued growth and new experiences to California Theta at U.C. Irvine. The chapter has grown to 76 actives with the initiating of 19 fall pledges in January. With the pledging of 11 young men this spring quarter, the continued growth of Phi Delta Theta is assured, while at the same time our commitment to quality continues.

With a goal of increasing campus visibility, Cal Theta has begun a program of helping create a more beautiful Irvine campus. While putting in close to 300 man hours, the chapter has been able to complete numerous landscaping projects that would otherwise have gone unfinished. Through this and our annual spring community service project of renovating a YMCA camp, Cal Theta has continued to work together to help the community.

Academically, Cal Theta placed over 20 per cent of its members on the Dean's honor list. In addition, brothers in Political, Biological, and Computer Science have received recognition for published papers, research projects, and acceptance into medical school.

A busy social and athletic schedule rounds out the Irvine Phi's life. The future of California Theta looks great with housing expected within five years. Goals for the future include earning another Gold Star as we did last year, and continue to achieve our goals of excellence.

### UNIVERSITY OF CALIFORNIA - LOS ANGELES

California Gamma (1924), 525 Landfair Ave., Los Angeles, CA 90024. Chapter Adviser - Perry H. Jones, 11355 Dulcet Ave., Northridge, CA 91326. Rush Chairman - Greg Land, 525 Landfair Ave., Los Angeles, CA 90024.

It's been another action-packed year here at Cal Gamma. We're happy to announce that we've more than doubled our membership this year and we're not planning on stopping! Among the various activities undertaken by the brothers this year were: Phi-Delt nite at the movies, and our elegant spring formal.

We also participated in several all-UCLA events, including GREEK WEEK and UCLA Mardi Gras—the largest student-run event West of the Mississippi and our favorite philanthropic event.

For our other quarterly philanthropy events we took some great kids from Amigos Del Barrios to the L.A. Zoo and collected cans for the food drive.

We've also been extremely active in general events—sending a large delegation to the Tri-Prov at U.C. Davis and also large contingents to the founder's days in Orange county and Greater Los Angeles. And you can be sure that a R.V. full of brothers are anxiously awaiting this years General Convention in New Orleans.

On the campus front, the Phi Deltas have participated in a wide range of Intramural sports, including football (led by Q.B. **Scott "One Brow" Matulis**), volleyball, soccer, softball and even co-ed innertube water polo. Our ferocious play in all these sports is starting a new era in Phi Delt athletics.

We're also very proud of the accomplishments of individual brothers, namely **Scott Adamson**—recently elected executive vice president of the California College Republicans, **Bruce Leonard** and **Scott Matulis**—writers for the school newspaper, and brothers **Jay Duncan** and **Rob Bigelow**—D.J.'s on UCLA's radio station. In addition, brothers have been elected to Morter Board, Order of Omega and several have received Academic Scholarships. Scholastics is still job one with us.

In the near future, we look forward to

hosting the Olympics along with the rest of UCLA. Several brothers will be working in the olympic village and we hope to accommodate Olympic visitors in our present domicile. Also in the near future, we hope to get actively involved with our newly re-instated housing corporation—headed by alumnus Hugh Guier. We will continue in our pursuit for locating and purchasing a true fraternity house. Brother Phis, we look forward to a great year and we welcome you to visit with us any time.—**Daniel Weingart**

### UNIVERSITY OF CALIFORNIA - SAN DIEGO

California Kappa (1982), Box B-023 Student Center, LaJolla, CA 92093. Chapter Adviser - Robert E. Eustice, 2323 Donnington Way, San Diego, CA 92139. Rush Chairman - Eric Freedman, 2017 Yacht Resolute, Newport Beach, CA 92660.

It is with great pride that one looks back on California Kappa's accomplishments of the past academic year.

With the end of April came the sound of wedding bells for California Kappa Chapter Adviser **Bob Eustice**, who was married April 28, 1984. Once again, congratulations and best wishes for their continued happiness are extended.

The past year was truly one for success in many areas, especially in sports, where brothers obviously excelled. **Peter Lund**, UCSD Track, broke a University record, standing since 1968, with a Javelin throw of 194 feet, twenty-three feet farther than he had ever thrown before. **Eric Grabow** succeeded in winning a spot to represent the West Coast in the United States Water Skiing finals. And in Golf, **Bruce Nakamura**, all-around sportsman, was named *All-American* in the NCAA Division two for the fourth year in a row; a feat never before done.

Something which has been done before and has become a California Kappa tradition is the annual spring Colorado River trip/retreat which once again was one of the highlights of the year. For the weekend of April 13-15, actives and most of the pledges from Epsilon class, set afloat in 25 canoes, floated leisurely down about thirty smooth miles of the Colorado River. Cooled by the melting leftovers from an excellent ski season in the Rockies, the water carried the group over a couple of small obstacles (that dam kind crept up on a couple of people...) all day Saturday. That night, a bonfire and a meeting under the stars on the Arizona bank of The River. A little more cruising Sunday morning and then back to eight more weeks of classes. Another great start to a spring quarter.

Since its conception, the California Kappa Chapter of Phi Delta Theta has always been an innovative and active chapter. A standard destined to continue on in the years to come.—**Dana M. Ahrensberg**

### UNIVERSITY OF SANTA BARBARA

California Eta (1967), 6517 El Greco, #5, Goleta, CA 93117. Rush Chairman - Greg Chambers, 6517 El Greco, #5, Goleta, CA 93117.

### UNIVERSITY OF SOUTHERN CALIFORNIA

California Delta (1948), 1005 W. 28th St., Los Angeles, CA 90007. Chapter Adviser -Robert J.M. Fyfe, III, 19433 Runnymede St., Reseda, CA 91335. Rush Chairman - Paul White/Rick MacLeod, 1005 W. 28th St., Los Angeles, CA 90007.

### COLORADO COLORADO COLLEGE

Colorado Beta (1913), 116 E. San Rafael St., Colorado Springs, CO 80903. Chapter Adviser -Lynn A. Bevington, 1513 Alamo Drive, Colorado Springs, CO 80903.

### UNIVERSITY OF COLORADO

Colorado Alpha (1902), 1111 College Ave., Boulder, CO 80302. Chapter Adviser - David T. Brennan, 6580 S. Heritage Pl. W., Englewood, CO 80110. Rush Chairman - Peter Burridge, 1111 College Ave., Boulder, CO 80302.

### FLORIDA FLORIDA STATE UNIVERSITY

Florida Gamma (1950), P.O. Box U-6666, Tallahassee, FL 32306. Chapter Adviser - W. Marcus Beck, 923 Alachua Ave., Tallahassee, FL 32308. Rush Chairman - Lawton DePriest, P.O. Box U-6666, Tallahassee, FL 32306.

### JACKSONVILLE UNIVERSITY

Florida Zeta (1968), Box 465, Jacksonville University, Jacksonville, FL 32211. Chapter Adviser - Stephen M. Crandall, 5350 Arlington Expressway 4001, Jacksonville, FL 32211. Rush Chairman - Dave Dean, 2004 Landwood St., Jacksonville, FL 32211.

This year was extremely successful and productive for the Florida Zeta chapter.

Fall semester began with rush, and again Phi Delt secured the best men on campus for membership. Those initiated were: **Doug DeRienzo**, **Rick Gay**, **Robert Leverock**, **Frank Macedonio**, **Scott Richter**, **Ed Uzzle**, and **Doug Young**.

The big story in fall was intramural football. This year we went undefeated and won the school championship. In December was our annual Christmas tree sale. We sold over 750 trees and made over \$5000 profit.

At the close of the fall semester, the Phis ranked second among fraternities academically, and we also extended best wishes to departing brothers **Dan Ehmann**, **Mark Roesser**, **Bob Rosenbaum**, and **John Schenone**, who have contributed a great deal to the Brotherhood.

The Founder's Day celebration in the winter once again showed that the Phis stand head and shoulders above the other Greeks on campus. It was highlighted by a cruise down the St. Johns river and featured the biggest alumni turnout in history. Brothers honored at the ceremony were: Best Brother—**Bruce Kudryk**; Outstanding Officer—**Gary Clough**, president; Outstanding Service to the University—**Ed Galambos**; Brinton J. Dufford Award—**Gary Clough**; Outstanding Alumni—**Steve Crandall**.

In softball the Phis went undefeated and won the fraternity league, which enabled us to win the University's All-Sports Trophy.

Congratulations to the winter initiates: **Brett Boland**, **John Hall**, **Mike Leone**, **Bob Rose**, and **Chris Thornlow**.

Good luck and best wishes to departing brothers **John Heimke**, **Tim O'Rourke**, **Brad Reinard**, and **Dave Voell**, who have contributed a great deal to the Brotherhood.

Finally, we would like to thank **Steve Crandall** for the time and effort he has put in as Chapter Adviser. And special thanks goes to **Gary Clough**. We deeply appreciate his outstanding dedication and effort given to the Brotherhood during his year as President.—**Scott Richter**.

### ROLLINS COLLEGE

Florida Beta (1934), Box 2394, Rollins College, Winter Park, FL 32789. Chapter Adviser - William Loving, 1120 Willowbrook Trail, Maitland, FL 32751. Rush Chairman - Peter L. Pollock, Box 4018, Greenville, DE 19807.

### UNIVERSITY OF CENTRAL FLORIDA

Florida Iota (1981), P.O. Box 26267, U.C.F., Orlando, FL 32816. Chapter Adviser - Jack Boyle, 429 Whispering Oak Lane, Apopka, FL 32703. Rush Chairman - Don Hettenbach, 167 Post and Rail Rd., Longwood, FL 32750.

### UNIVERSITY OF FLORIDA

Florida Alpha (1924), 121 SW 13th St., Gainesville, FL 32601. Chapter Adviser - Lynn Blevins, 4145 NW 67 Terrace, Gainesville, FL 32601. Rush Chairman - Ron Gall, 121 SW 13th St., Gainesville, FL 32601.

### UNIVERSITY OF SOUTH FLORIDA

Florida Epsilon (1967), 13717 N. 42nd St., #4, Tampa, FL 33612. Chapter Adviser - Martyn C. Mercer, 3821 N. Oak Dr., Apt. J-12, Tampa, FL 33611. Rush Chairman - Joel Deynzer, 13717 N. 42nd St., #4, Tampa, FL 33612.

This year proved to be quite busy for Florida Epsilon. During the first semester we had a very successful rush. Much thanks to our rush chairman Craig McCandless for a job well done. We were very proud to win Delta Gamma's Anchorsplash for the nth year in a row. Good job Phis!

The first semester also saw the retirement of our chapter adviser, **Mike Ward**, after ten very successful years. We held an alumni reunion in his honor and presented him with a Phi Delta Theta watch. Alumni from all over the country came to wish Mike the best of everything and to thank him for his years of service. We also welcomed our new adviser, **Marty Mercer**, to our chapter. **Marty** was our president four years ago and just recently returned to the Tampa area with his wife. **Marty** successfully began an officer's retreat program in the chapter this year. It has proven to be quite helpful in many areas of chapter operation!

The second semester also proved to be very eventful. Another fine pledge class was inducted in January and we just recently initiated them into the brotherhood. We wish them good luck in their four years at the University of South Florida.

Our 17th annual Phi Delta Theta Derby was the most successful fund raising event of the year. In fact, we raised more money for leukemia than ever before in the history of our derbies. On April 18th we presented the Suncoast Chapter of the Leukemia Society with a check for \$2603.86! We would like to thank the alumni who traveled to Tampa for Derby. Your spirit was



greatly appreciated!

This year we have a number of brothers graduating. We would like to express our thanks for their years of hard work and our best wishes for their future: **Fred Cooke, Tim Duffy, Jeff Marshall, Eddie Morrell, Paul Winters, Drew Cronin, Harvey Petty, Terry Went, Joel Deynzer, Kevin Cramer, Bill Fehrman and Todd Schwartz**—you all will be greatly missed by the chapter. . .

The brothers of Florida Epsilon are looking forward to meeting Phis from all over the nation and Canada at the Convention! See you in New Orleans.—**Paul Winters**

#### UNIVERSITY OF TAMPA

Florida Theta (1979), Box 2741, University of Tampa, Tampa, FL 33606. Chapter Adviser - Thomas C. Morrison, Jr., 208 Danube Ave., Apt. 208, Tampa, FL 33606. Rush Chairman - Mark Young, Box 2741, University of Tampa, Tampa, FL 33606.

Florida Theta has ended another excellent year at the University of Tampa. Over these last two terms we have welcomed into our brotherhood nineteen outstanding men. This brings our total number of initiated brother up to 151 in six years; something not dreamed of by our founding brothers.

The brothers ended the 1983-84 school year on a very good note. For the sixth year in a row, Florida Theta was voted the "Outstanding Fraternity" on the University of Tampa campus. This honor is bestowed by a committee made up of the University's Provost, Dean of Students, Director of Athletics, Director of Student Affairs, and the Director of Physical Plant.

Several factors played key roles in the chapter retaining this title. In the area of academics, Florida Theta not only raised it's GPA considerably, but also was ranked number one among the fraternities on campus. Also, the chapter's campus and community involvement was greater than ever. Brothers participated in all areas of student life, from Resident Advisers to the Vice-President of Student Government. Chapter activities in the community included everything from donating food to an area childrens home at Christmas time to numerous road-blocks for the American Cancer Society. "Phi Delt Frolics", a week-long fun-n-games festival at the University, raised some \$600.00 for the Muscular Dystrophy Association. All tolled, our total community service hours for 1983-84 came to 2441, something we are extremely proud of.

To sum it all up, "a good time was had by all" at Florida Theta this year. The brothers are looking forward to next fall with great expectations.

#### GEORGIA

##### EMORY UNIVERSITY

Georgia Beta (1871), Drawer L, Emory University, Atlanta, GA 30322. Chapter Adviser - Robert D. Strauss, 4000 1st Atlanta Tower, Atlanta, GA 30383. Rush Chairman - Todd Mack, Drawer L, Emory University, Atlanta, GA 30322.

##### GEORGIA COLLEGE

Georgia Zeta (1975), C.P.O. Box 3100, Milledgeville, GA 31061. Chapter Adviser -David M. Grant, P.O. Box 776, Milledgeville, GA 31061. Rush Chairman - Dean Grant, C.P.O. Box 3100, Milledgeville, GA 31061.

During the academic year of '83-'84, the Georgia Zeta Chapter of Phi Delta Theta was honored in representing intramural flag football in New Orleans, LA, placing tenth in the nation.

New officers have been elected for '84-'85: President **C. Len McDade**, Milledgeville, GA; Vice-President **Frank W.L. Huskey**, Hinesville, GA; Secretary **Bob A. Nelson**, Monroe, GA; Treasurer **Garry L. Jones**, Dublin, GA; and Warden **Joe T. Veal**, Milledgeville, GA.

Community Service projects have included road blocks for Toys for Tots and Baldwin County Recreation Department. Brothers and pledges have recently taken part in dressing as the Easter Bunny at the local shopping mall for the Milledgeville Women's League.

Four Phis were sent to South Carolina Beta representing Georgia Zeta for COAC. We would like to extend our gratitude to South Carolina Beta and to all other chapters present, you made the COAC both enjoyable and beneficial.—**Bob A. Nelson**

#### GEORGIA SOUTHERN COLLEGE

Georgia Epsilon (1971), P.O. Box 12412, Georgia Southern College, Statesboro, GA 30458. Chapter Adviser - Dight L. Olliff, 10 Bruce Drive, Statesboro, GA 30458. Rush Chairman - Billy Green, P.O. Box 987, Statesboro, GA 30458.

The 1983-84 school year has been a very productive and promising year for the brothers of Georgia Epsilon.

Stepping back in time for just a second, a community fundraiser for a charity must be mentioned. In Spring of 1983, the Brothers of Ga. Epsilon organized a charity walk for Huntingtons Disease to Atlanta from Statesboro. The Brothers would also be joined by the Brothers of Georgia Delta, Georgia Gamma, Georgia Zeta, and Georgia Alpha. A special thanks to all of the other Phis that helped make this project a success. The Georgia Epsilon take great pride in accounting for \$3000 of the \$8800 raised.

Since Fall-'83, the chapter has enjoyed a feeling of achievement. Due to an improved pledge program, 11 of our 13 pledges were initiated. Scholastic achievement is also a very important part of the environment of Georgia Epsilon. Our number two ranking in grade point average



**COLORADO ALPHA:** This year's community service project was a softball tournament

that raised \$400 to benefit Lou Gehrig's disease. The chapter plans to make the event an annual one and have already begun planning for next year.



**FLORIDA EPSILON:** Derby chairman Todd Schwartz, President Mike Morlan and the brothers of Florida Epsilon present representatives of the Leukemia Society with a record-breaking donation check of \$2,603.86.

out of 14 fraternities for the past four quarters is proof of that quality. We also made the move from an off-campus house to an on-campus house. Although the old house is greatly missed, we feel that the new location will prove beneficial in Rush. Socials at our "out-of-the-way" house remain unequaled by all other fraternities at GSC. But, so far, other sororities have used our house for functions; thus setting another tradition for Phi Delt at GSC.

Winter quarter started off on a good "note" due to a Music Television social. The chapter is growing quite nicely due to a Winter pledge class of 7, and an anticipated 15 or more for Spring. Also, another ski trip for the brothers is in the planning stage.

The newly elected officers of 1984-85 for Georgia Epsilon are: President **Bob Hanberry** from Statesboro, Vice-President **Bradley Spieth** from Statesboro, Treasurer **David Lynch** from Statesboro, Secretary **James Collins** from Statesboro, Pledge-master **Dug Duggan** from Statesboro, Warden **Rob Williams** from Statesboro, Rush Chairman **Billy Green** from Statesboro, and Co-Rush Chairman **Reid Puckett** from Albany. The newly elected officers have already taken office and produced some positive results for the chapter.

Spring quarter holds many special events for Ga. Epsilon. The celebration of two marriages of recent graduating brothers. The couples are: Brother **Jerry Rushing** and Brother **Alex Hanberry**, Greek Week, C.O.A.C., and sports competition will also make Spring a memorable one.

The 1983-84 year was a success for the Brothers of Ga. Epsilon. The 1984-85 year holds many dreams and new goals to be achieved. With everything going for this chapter, growth and the setting of higher goals can be expected. All of the Brothers of Ga. Epsilon are especially proud to be Phis.—**James Collins**

#### GEORGIA TECH

Georgia Delta (1902), 734 Fowler St., N.W., Atlanta, GA 30313. Chapter Adviser - Frasier Smith, Carter & Assoc., Inc., 1100 Spring St., Atlanta, GA 30367. Rush Chairman - Pete Sherrill, 734 Fowler St., N.W., Atlanta, GA 30313.

#### MERCER UNIVERSITY

Georgia Gamma (1872), Box 80, Mercer University, Macon, GA 31207. Chapter

Adviser - Michael L. Johnson, Lot 126, Forest Place, Macon, GA 31206. Rush Chairman - Shelby Lindsay, 105B Westcliffe Ctr., Warner Robbins, GA 31093.

Georgia Gamma's 1983-84 school year can undoubtedly be described as the best in recent memory. Our achievements began with the stabilization of our finances. This year our chapter experienced the best monetary situation we've had in over ten years. Put simply, we are in the black and intend to remain that way.

Our fall quarter was a successful rush, bringing in five Phikeias. We also initiated two men who had pledged in spring '83. Those five new pledges were subsequently initiated in the winter quarter '84. Credit for this goes largely to the excellent overhaul of our pledge program by our then-rush chairman, **John Lukosky**. His leadership and hard work led to his unopposed election to the office of chapter president. The acuity of his selection of rushees was proven by the fact that all five of the new brothers went on to hold offices in the fraternity.

The Mercer Phis rallied to bury the other fraternities in participation for campus activities. The entire chapter turned out in force for Greek Week, taking part in all events. This enthusiasm was rewarded by receiving the "Highest Participation" plaque from the IFC. The Mercer blood drive witnessed our chapter give 100%, taking yet another participation award.

During the winter quarter improvements were made on our lodge. Walls were repainted, the bathrooms were redone, new furniture was purchased, and cleanups were frequently attended.

It's been an excellent year all around for Georgia Gamma, and our prospects for next year look even better.—**John Young** and **Shelby Lindsay**

#### UNIVERSITY OF GEORGIA

Georgia Alpha (1871), 690 S. Lumpkin St., Athens, GA 30605. Chapter Adviser - Robert D. Heath, 120 Pendleton Dr., Athens, GA 30606. Rush Chairman - Bo Simmons, R.#1, Box 136, West Point, GA 31833.

The brothers of Georgia Alpha jumped right into the 1983-84 academic year with a tremendous fall rush. Because of their effort and enthusiasm, we pledged 20 fine men.

These included **Ned Baker, Tom Hutcheson, Paul Sutter, Chris Theobald, David Williams**, Chattanooga, Tenn.; **Chris Carter**, Albany, GA.; **Mike Harrell**, Tallahassee, Fla.; **John Jackson**, Waynesboro, Ga.; **Terry Jinks**, Griffin, Ga.; **George McCommon**, Britt Pilcher, Macon, GA.; **Mike McIntyre**, Malcolm Newton, Arthur Sinclair, Reed Whillar, Atlanta, GA.; **Bob Nelligan**, Milledgeville, Ga.; **Parker Plaisted**, Richmond, Va.; **Ted Setzer**, Toccoa, Ga.; **Van Shapard**, Rome, Ga.; and **Jerry Thurmond**, Washington, D.C. We also pledged **Tom Meritt, Americus, Ga.** and **Ray Tolleson**, Richmond, Va. winter quarter.

Georgia Alpha has always had phenomenal support from its alumni. They have helped with rush, house renovations, and in many other areas. Special thanks goes to **Frank Carter** ('73), **Fred Copeland** ('67), **Bobby Heath** ('73), **Rowland Radford** ('52), **Arthur Steedman** ('70), and **Cleve Willcoxon** ('54). A function in honor of all the alumni was held winter quarter, and will now be an annual event. The date and relevant information concerning this event will be in the fall newsletter.

In community service, we had a successful fund raiser drive for the Shepard Spinal Clinic in Atlanta, GA. We also cleaned up Sandy Creek Nature Center and participated in various other service projects.

The end of the school year marks the beginning of a new rush season. If any Phi's know anyone planning to attend the University of Georgia in the fall, please contact our rush chairman, **Bo Simmons**, ('86). Once again, I would like to thank all alumni for their continuing support.—**Paul V. Elmore**

The new academic year brought with it a few changes at Georgia Alpha. The most important of these being a stronger emphasis on the pledge program. The brothers know that being in college for the first time, coupled with the numerous activities associated with pledgship is sometimes very strenuous. It is their goal to make the pledge program an enjoyable and learning experience, and not just a task that must be completed.

The first step taken to reach this goal was to get the entire Chapter involved in the pledge program. Several events were scheduled so that the pledges could become bet-

ter acquainted with their big brothers. It is important for a pledge to have an older person in the Chapter, other than the pledge trainer, that he can go to with questions or problems. Also, Georgia Alpha wants to make sure that the pledges do not feel inferior or intimidated in any way. Both brothers and pledges participated in several community service projects and work projects. A pledge is asked to do nothing a brother wouldn't first do himself.

Georgia Alpha also believes that a unified pledge class is of utmost importance. Weekly events are scheduled for the sole purpose of getting them together as a group. Strong ties within a pledge class help to unify the Chapter as a whole. There is also a mandatory weekly study hall. This is designed to remind the pledges why they are in college in the first place.

When a pledge has completed pledgship, he should feel a sense of accomplishment. He should not only be enlightened about Phi Delta Theta, but also life in general. During the rest of the time he is in college, he will be able to hand down his knowledge and wisdom to pledges who will follow in the same manner it was presented to him. With this emphasis on a strong pledge program and a more unified Chapter, Georgia Alpha hopes to make college a pleasurable and learning experience with memories that will last a lifetime.

#### IDAHO

##### UNIVERSITY OF IDAHO

Idaho Alpha (1908), 804 Elm St., Moscow, ID 83843. Chapter Adviser - Timothy W. Brown, 868 E. 7th St., Moscow, ID 83843. Rush Chairman - Matt Wigle, 8625 Targee, Boise, ID 83709.

#### ILLINOIS

##### KNOX COLLEGE

Illinois Delta-Zeta (1871), 516 S. West St., Galesburg, IL 61401. Chapter Adviser - James L. Bjorkman, % Lawrence D. Johnson Ins. Agency, 101 E. Main St., Galesburg, IL 61401. Rush Chairman - Robin Carre, 516 S. West St., Galesburg, IL 61401.

Throughout this year, Illinois Delta Zeta has continued to hold the highest grade point average of any fraternity on the Knox campus, along with the strongest participation in a wide range of extra-curricular activities.

The highlight of this year (as it always is) was the activation of twelve pledges into the chapter. Presidential scholars **Ted McCulloch** and **Rick Roberts** were awarded the Phi Delta Theta Outstanding Scholarship and the Murray S. Smith Outstanding Pledge Award respectively. With this important addition, Illinois Delta Zeta now boasts 38 active brothers.

Officers elected this past winter were brothers **Ed Kemper** as president, **Robin Carre** as vice-president, **Costas Svingos** as treasurer, **Nathan Russell** as Secretary, and **Jeff Cooper** as house manager.

Again, due to the dedication and hard work of alumni **Jamie Bjorkman** and **Dave Swanson**, the annual Founder's Day festivities were thoroughly enjoyed. This year the chapter added a light note with the old tune "Phi Delta Theta For I," made possible under the strict direction of our chorister, **Joseph Flanagan**. It follows to say that the chapter is continually upholding the title of "the singing fraternity."

Illinois Delta Zeta was again very active in athletics. This year, we participated in soccer, led by **Robin Carre** as captain, cross country running, led by **Larry Msall** as captain, track, and intramurals, along with tennis, water polo, and lacrosse.

In the winter, Illinois Delta Zeta contributed to the community by collecting for the United Way. This spring we joined with Delta Delta Delta sorority to clean up a neighborhood cemetery.

We are glad to say that alumni continue to make an effort to visit the house as often as possible. This kind of enthusiasm helped





**GEORGIA ZETA:** As a community service project brothers at Georgia Zeta sponsored an Easter Party for area children.



**GEORGIA EPSILON:** Phis and friends at Georgia Epsilon relax on the porch of the chapter house.

make our annual Homecoming as enjoyable as ever. The chapter again owes a great thanks to alumnus brother **Mike Orloff** for his extremely generous contribution.—**Nathan W. Russell**

#### **NORTHWESTERN UNIVERSITY**

Illinois Alpha (1859), 2347 Sheridan Rd., Evanston, IL 60201. Chapter Adviser - David Shappell, 553 Hinman, D-2, Evanston, IL 60202. Rush Chairman - John W. Yale, 812 Greenwood, Glencoe, IL 60022.

Illinois Alpha at Northwestern University enjoyed a great year highlighted by a very successful fall rush program, various philanthropic events, and several outstanding athletic achievements.

Last Fall, 18 pledges began preparing to become actives. Weekly pledge meetings and events such as the fall pledge formal at the Hyatt Regency in Chicago enabled the pledges to learn about the rich history of Phi Delta Theta. Their hard work paid off when induction rolled around at the beginning of Winter Quarter.

Illinois Alpha achieved one of their main goals this past year; to become more involved in philanthropic activities. These included sponsoring Delta Gamma sorority's annual Anchor Splash where proceeds from the day's activities go to help the blind. Several brothers were quite active in last Spring's Special Olympics. The brothers hope to increase their participation in these and other philanthropic ventures.

Again, Phi Delt was strongly represented on the Northwestern football team. One highlight came after the season when brothers **Mike Guendling** and **John Kidd** were drafted into the National Football League. Brothers **Phil Leonard** and **Steve Tasker** were also picked as captains for next year's squad; **Tasker** for the second year in a row.—**Ken Toving**

#### **UNIVERSITY OF CHICAGO**

Illinois Beta (1865), 5625 S. University Ave., Chicago, IL 60637. Chapter Adviser - M. Cheak Yee, 6000 N. Sheridan Rd., Apt. 413, Chicago, IL 60660. Rush Chairman - Chris Ruggerio, 5625 S. University, Chicago, IL 60637.

Phi Delta Theta of University of Chicago, Illinois Beta, has undergone vast and dramatic change this academic year starting with the rush. Illinois Beta has pledged more men than any year since 1947 with still five weeks of rushing left in the year. Ever mindful of our responsibilities to Phi

Delt as an institution, we were not just content to accept numbers into our brotherhood but worked for pledge classes which would uniformly exemplify our three founding principles.

Although we have been a gold star chapter for the past two years, in many ways this has been a time of rebuilding due to the graduation of many of our senior leaders. However, our new generation of brothers, together with those elder brothers remaining, are assuming leadership of the chapter, and continued the work and intentions of those who had departed.

This year we have continued the task that began in 1977 with the reinstatement of our chapter: the task of creating an exemplary chapter, one that epitomizes the ideals of Phi Delta Theta and perpetuates the proud tradition of our fraternity as our local founder R.A.D. Wilbanks meant it to be when he founded Illinois Beta at the University of Chicago in 1865.

We have also endeavored to strengthen our relations with the University administration, the student body, and the larger University community. Our contact with the administration has been productive. In the academic year of '83-'84 we had two brothers on President Gray's University advisory committee giving Phi Delt a loud voice on directions which the University of Chicago will be taking in the future. The administration is also appreciative of our efforts to assist the university, in particular our model assistance with the prospective student weekends. During these weekends prospective students tour the University and make the decision whether to attend the University in the fall. We served the University as guides for the prospectives helping them find their way through the University neighborhood and having them attend our classes. While this service aids the University in recruitment of new students it also enables us to inform prospectives about Phi Delta Theta and fraternity life.

Through our program of weekend parties and Thursday evening study breaks we have increased the popularity of Phi Delta Theta among the students. And through our community service projects which included the recycling of aluminum, several blood drives, fund raising for P.B.S. and aiding Senator Percy's reelection campaign we have increased the standing of Phi Delta

Theta in the community.

In the upcoming year while always striving to better represent the principals of Phi Delta Theta, and continuing to improve our standing on campus, we hope to make several improvements to the physical plant of the house, the foremost of which is the revitalization of our chapter hall.

The year has been full of many successes and with increased unity in the brotherhood spearheaded by an exceptional group of young leaders the prospects for the coming year look even better.

#### **UNIVERSITY OF ILLINOIS**

Illinois Eta (1893), 309 E. Chalmers, Champaign, IL 61820. Chapter Adviser - Edward H. Rawles, % Reno, O'Byrne & Kepley, Box 693, Champaign, IL 61820. Rush Chairman - Jim Iuoria, 513 Willow Wood Dr., Palatine, IL 60067.

Progressive improvements and success in a variety of areas have been experienced in the last months by the Brothers at Illinois Eta. In the academic area, the 3,913 Chapter average placed Phi Delta Theta above both the all-men's and the all-fraternity averages. Two of last spring's graduates were accepted to professional schools: **Ken Zlotkowski** at the University of Illinois Dental School in Chicago, and **Steve Conroy** (last year's Phi Scholarship winner) in the physical therapy program at the Mayo Clinic, Rochester, Minnesota.

The executive officers—**Terry Kiely**, **Pat Morrissey**, **David Kissel**, **Dave Chiappe**, **Jeff Fryling**, and **Bob Reeg**—have been developing a sound administration through a management-by-objectives program. This has helped the Chapter set some very important goals for the year, one of which is to qualify for some of the awards given by the General Headquarters.

**John Smith**, **Pat Morrissey**, **Ken Ross** and alumnus **Ken Zlotkowski** have announced their engagements. The fine young women have all received their roses as part of the Chapter's recognition of these milestones. **Bob Werner** ('82) was married to Melissa Machon last June.

Following the strong athletic tradition established by great brothers in the past, the Chapter currently has seven varsity athletes in swimming, golf, cross country, and hockey. Intramural titles were secured last spring in broomball and hockey, and the volleyball team reached the finals.

The annual "Play Day" for the underprivileged children of Champaign will be held this fall in conjunction with Alpha Delta Phi sorority. The Community Service Day project being planned will find the Brothers working with the Champaign County Humane Society. As in the past, there will be a philanthropic activity to aid the victims of amyotrophic lateral sclerosis disease, usually known to most people by the name of our Brother **Phi Lou Gehrig**.

Bouncing back with great vigor after a very serious error on the part of the Interfraternity Council's Rush Committee (where the third stage invitation cards were placed in the wrong box and Illinois Eta secured no third stage rushees and thus no formal pledges last spring), there has been a successful informal rush which has brought some fine men as new pledges. The informal rush is continuing during the fall semester.

Illinois Eta has an open door hospitality policy. Let us see your faces at any time and you'll know that we are proud to be Phis!—**David Chiappe**

#### **INDIANA BALL STATE UNIVERSITY**

Indiana Kappa (1969), 703 N. Dicks St., Muncie, IN 47303. Chapter Adviser - Donald V. Badgley, 303 Riley Rd., Muncie, IN 47304. Rush Chairman - Randall Miller, 703 N. Dicks St., Muncie, IN 47303.

Indiana Kappa at Ball State University completed its first annual Keg Roll for the fight against Lou Gehrigs disease April 28, 1984. The Roll started in front of the Chapter house at Ball State and ended at Miami University with a fine reception from the Brothers at Ohio Alpha. Pledges and donations were taken from residents and businesses around the Ball State area. Approximately \$350 was donated. Indiana Kappa plans to carry on with this event in the years ahead with continued and improving success.

Phi Deltas also enjoyed huge success in spring intramurals. The volleyball team scored an undefeated season while the softball team suffered only one loss.

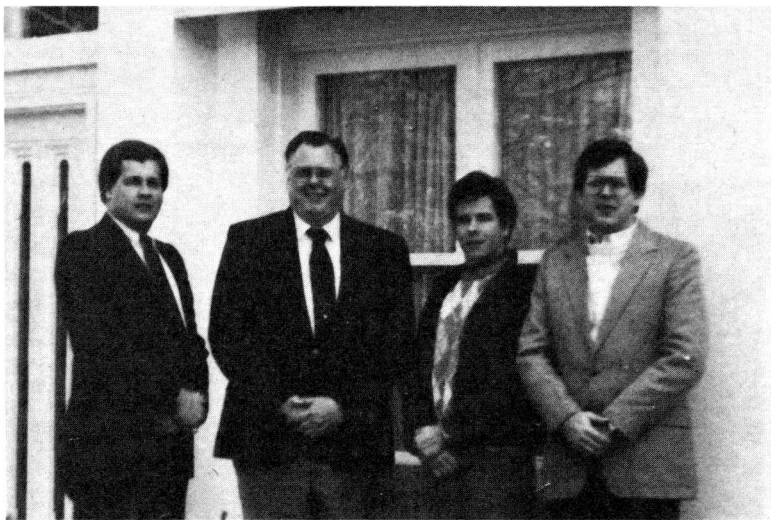
#### **BUTLER UNIVERSITY**

Indiana Gamma (1859), 705 W. Hampton Drive, Indianapolis, IN 46208. Chapter Adviser - Robert B. Scott 9102 Bryant Ct., Indianapolis, IN 46250. Rush Chairman - Thomas L. Pettinga, 705 W. Hampton Drive, Indianapolis, IN 46208.

Many great things have happened at Indiana Gamma in the past year. We started the year off with a new event which is going to become a regular activity for us and Phis from the other chapters across Indiana. This event is a frisbee golf tournament titled the Indiana Gamma All-Phi Pebble Beach Frisbee Golf Classic.

The tournament, which tees off at the Indiana Gamma chapter house, is a brotherly competition between the 10 chapters of Phi Delta Theta in Indiana. The brothers from Wabash were this year's victors in the competition. We are really looking forward to next year's tournament.

This year also brought the men of Indiana Gamma a new chapter adviser. Brother **Stan M. Cuppy** (Butler '78) will be serving in this capacity and guiding the house through the next several years. His work is already strengthening the chapter.



**LIKE FATHER, LIKE SONS:** William F. (Bill) Carr (Butler '49) (second from left) now has three Phi sons. The latest is son Andy (Ohio '87) (third from left). The other two sons are Larry (Bowling Green '73) and Tom (Bowling Green '72). Larry served the fraternity as a chapter consultant from 1973 to 1975.

This year's Indiana Gamma Alumnus of the Year was brother **Nobel Ropkey**. In attendance at the banquet held at the chapter house, in his honor were his son, **Fred Ropkey** and grandson, **Rick Ropkey** both of whom are also Phis. Their unselfish service to Indiana Gamma is truly appreciated.

The chapter launched a new community service project this year, and we feel it was very successful. It was a swim-a-thon held at the Butler pool. Through it, we raised over a thousand dollars for this year's charity, Special Olympics.

We are once again very proud to have been nominated for the Gold Star and we feel that the credit for our success should be shared with **Timothy Wright**, house corp. pres.; **Fred Dunn**, prov. pres.; **Bill Ney**, faculty adviser; **Pete Fisher**, financial adviser and the many other alumni and friends of Indiana Gamma whose support we value tremendously.

Fall of 1984 will see Indiana Gamma celebrating her 125th Anniversary. This is a very exciting time for us and we are looking forward to a great next year.—**Tony M. Harrington**

#### **DEPAUW UNIVERSITY**

Indiana Zeta (1868), 446 Anderson St., Greencastle, IN 46135. Chapter Adviser - Dr. Gordon B. Walters, 827 Gardenside Dr., Greencastle, IN 46135. Rush Chairman - Remington Fairlamb/Phil McKelvey, 446 Anderson St., Greencastle, IN 46135.

The 1983-84 year was outstanding for Indiana Zeta chapter. The year started with a successful rush that produced one of the largest pledge classes in recent years. The class, initiated in early spring, included one senior, one junior, five sophomores, and sixteen freshmen. We expect great things from these new brothers.

Eager preparation for our community service project, the Second Annual Putnam County Special Olympics, paid off when the day for the event came. Over 100 special athletes from all over the country were invited to compete for local recognition and to prepare for the state meet this summer. Events included the softball throw, the 50 meter dash, the standing long jump, and the frisbee throw.

Indiana Zeta's Little 500 bike team looked like the team to beat after claiming the pole position in time trials. An accident in the early stages of the race caused the team to lose valuable time, and thus finish sixth. Two of our brothers were recognized for their outstanding performances. **Stu Smith** ('84) was named a first team all-star, and **Mark Karner** ('87) was named Rookie of the Year and a second team all-star. Our chapter also won the Spirit Award for the special events leading up to the race. After a disappointing loss in volleyball, we responded with victories in the burrito eating contest and bathtub race.

Another highlight this year was DePauw's third place finish in NCAA Division III basketball. Brother **Craig McAttee** '85 as center was a valuable member of the team.—**Thomas J. Roesch**

#### **FRANKLIN COLLEGE**

Indiana Delta (1860), 698 E. Monroe St., Franklin, IN 46131. Chapter Adviser - Robert G. Smith, 1090 W. Jefferson, Franklin, IN 46131. Rush Chairman - Jeffrey S. Cooper, 698 E. Monroe St., Franklin, IN 46131.

The men of Indiana Delta have had a very successful 1983-84 school year. Eight outstanding men were initiated this year. These men are making their presence known in the chapter and will be very active in next year's offices. The new initiates are: **Matheus Brekelmans**, Holland; **Scott Lewellen**, Columbus, IN; **Jim McDonald**, Bean Blossom, IN; **John Mohler**, Plainfield, IN; **Dale Pauley**, Bloomington, IN; **Phillip Snyder**, Rodney Snyder, Logansport, IN; **Jeff Werner**, Batesville, IN.

There are currently 18 brothers living in the house which will make rush very important next year so that we will be able to increase that number. The men of Indiana Delta are currently second in overall intramural activity on campus. We just finished Greek Week at Franklin and the Phi Deltas swept the week long competition. Our Mother's Club held their senior honors picnic which went very well last week. At the picnic our five graduating seniors were recognized with tie clips from the Mother's Club. Of the five seniors, brother **Russell**

**Lemmons** will be studying history at Miami University, Oxford; brother **Patrick Collier** will be attending the I.U. School of Dentistry; and brother **Marty Gardner** has been accepted to four law schools. It has been a great four years for those brothers and those that remain here in Franklin wish them the very best of luck in the future.

This year we were nominated for Gold Star and have a good chance at getting The General Headquarters Trophy as well as the Bininger Religious Life Award. Scholarship is the most important aspect the men of Indiana Delta stress and can be reflected in our number 1 and 2 status on campus. Rush will be very important next year and brother **Jeff Cooper** has been very busy setting up a strong summer and fall program. We will be sending 4 delegates to the International Convention in New Orleans and hope to implement their ideas next fall in rush.

As the spring semester comes to a close summer occupancy of the house will hopefully be very constructive. There will be about ten brothers in the house who plan on building a flagstone wall as well as completely re-landscaping the entire house.—**Phillip Snyder**

#### **HANOVER COLLEGE**

Indiana Epsilon (1861), Box 86, Hanover College, Hanover, IN 47243. Chapter Adviser - Dwight Nelson, 1810 Crozier, Madison, IN 47250. Rush Chairman - Bob Wagner, Box 86, Hanover College, Hanover, IN 47243.

The Chapter was able to celebrate its winning of the Kansas City Trophy on Homecoming Day. The men of Indiana Epsilon organized a golf outing, lunch cookout, and pig roast for all the alumni that attended. The day was capped off with the presentation of the trophy to the entire chapter by province president **Fred S. Dunn**.

The winter term began with the installation of the 1984 pledge class. The class was under the direction of pledge master **Richard Paustenbaugh** who passed on the winning tradition of Indiana Epsilon. The pledges initiated on April 5 were **Randall Kron**, **Rick Shultz**, **Mike Doll**, **David Pietykowski**, **Jeff Albright**, **Mark Kleiman**, **Mike Schaivone**, **Todd Inman**, **Karl Getty**, **Mark Hinshaw**, **Doug Carter**, **Sam Bonsett**, **Steve Luce**, **Jon Pinnick**, **Jeff Smith**, **Randy Gipson**, **Pat Luce**, **Jeff Williams**, **Matt Boyd**, **Brian Lister**, **Dave Pritchett**, **Phil Ochs**, **Gregg Draper** and **Jeff Knecht**. The class has great potential in continuing the great success of the Indiana Epsilon Chapter.

The chapter was also bestowed the honor of hosting the Tri-Province Conference. The COAC was attended by over 50 members of chapters from the states of Indiana and Kentucky. The day began with invocation by Brother Rev. **David Turner** who also discussed the importance of attending the International convention in New Orleans. The brothers in attendance were also able to participate in a lecture and discussion on the topic of Drinking and Driving with an Indiana State Trooper. The Tri-Province Conference allowed the different chapters of Phi Delta Theta to trade and discuss new ideas for the continued success and improvement of their chapters.—**Mike Meyer**

#### **INDIANA STATE UNIVERSITY**

Indiana Eta (1869), 931 S. 7th St., Terre Haute, IN 47807. Chapter Adviser - Samuel J. Copeland, R.13, Box 347, West Terre Haute, IN 47885. Rush Chairman - Dave Grey, 102 Bianca Ct., Kissimmee, FL 32741.

#### **INDIANA UNIVERSITY**

Indiana Alpha (1849), 1215 N. Jordan, Bloomington, IN 47401. Chapter Adviser - Fred S. Dunn, 418 E. University, Bloomington, IN 47401. Rush Chairman - Bryan Urban, 1017 Rutland Way, Worthington, OH 43085.

#### **PURDUE UNIVERSITY**

Indiana Theta (1893), 503 State St., W. Lafayette, IN 47906. Chapter Adviser - Thomas Rehm, 100 Northwestern, W. Lafayette, IN 47906. Rush Chairmen - David Bennett/Steven Foutty, 503 State St., W. Lafayette, IN 47906.

#### **VALPARAISO UNIVERSITY**

Indiana Iota (1954), 652 Garfield Ave., Valparaiso, IN 46383. Chapter Adviser - Kenneth P. Mueller, 1554 Salamonie Ct.,





**INDIANA ALPHA:** Indiana Alpha's entry in the Little 500 Bike race at Indiana University finished 12 out of 33 this year after finishing second last year and winning the race in 1982. Photo by Danny O. Snow, University Publishing Co.

Valparaiso, IN 46383. Rush Chairman - Mile LeRose, 652 Garfield Ave., Valparaiso, IN 46383.

#### WABASH COLLEGE

Indiana Beta (1850), 114 W. College St., Crawfordsville, IN 47933. Chapter Adviser - Louis J. Fenoglio, 3313H Quarry Dr., Lafayette, IN 47905. Rush Chairman - Rob Fulkerson, R#1, Box 226, Wolcott, IN 47995.

#### IOWA DRAKE UNIVERSITY

Iowa Delta (1961), 1245 34th St., Des Moines, IA 50311. Chapter Adviser - Robert Eddy, 2018 70th St., Des Moines, IA 50322. Rush Chairman - Matthew Griggy, 1708 Kingsbury Lane, Oklahoma City, OK 73116.

Iowa Delta had another strong year in 1983-84. Pledging 15 men for the year, the brothers kept the chapter numbers steady. The general attitude is bright and things look good for the upcoming year if this optimism should run through the summer into the fall.

Scholarship represents the greatest gain the Phi Deltas mounted, as their overall cumulative G.P.A. rose by almost three-tenths of a point. Three brothers were inducted into the Order of Athena, the greek honorary society. Most outstandingly though, all 15 pledges were scholastically eligible to be activated into the brotherhood. This means they all achieved the university standard for G.P.A. and warranted entry into the active brotherhood, a feat rarely achieved.

The first alumni fund was established by Pres. **Dave McGee** and alumni contributed donations towards a building fund to be used exclusively for house improvements, rather than social events. The entire first floor was carpeted through the help of the Iowa Delta House Corporation.

We have been actively involved in community service programs for the past years. Including many projects at nursing homes and runaway centers. The brothers also helped in the Planned Parenthood of Iowa booksale. But the main project was working with the Variety Club of Iowa to help raise \$1 million for the charities of Iowa.

Held the weekend of March 3 and 4, the telethon features celebrities attempting to raise pledges in order to assist the charities throughout Iowa. The brothers served as chauffeurs to the many stars who help to put on this event. Some of the celebrities included Bea Arthur of "Maude", Missy Gold of "Benson," and football great Ed Podolak. The brothers enjoyed themselves while working in shifts varying from 4 to 6 hours.

Special thanks and congratulations to **Robert Eddy**, chapter adviser who retired at the end of the 1983-84 school term. **Eddy** provided many hours of dedication to help make Iowa Delta what it is today, and his departure affects many brothers. Best of luck to **Bob**.—**Joe Ellis**

#### IOWA STATE UNIVERSITY

Iowa Gamma (1913), 325 Welch Ave., Ames, IA 50010. Chapter Adviser - Paul Antol, Jr., 4211 Lincoln Swing, #26, Ames, IA 50010. Rush Chairman - Bob Lawson, 325 Welch Ave., Ames, IA 50010.

#### IOWA WESLEYAN COLLEGE

Iowa Alpha (1871), McKibbin Hall, Iowa Wesleyan College, Mt. Pleasant, IA 52641. Chapter Adviser - Merle C. Unkrich, R.R.1, Winfield, IA 52659. Rush Chairman - Charles A. Sengstock, McKibbin Hall, Iowa Wesleyan College, Mt. Pleasant, IA 52641.

Iowa Alpha enjoyed a very successful year. Membership rose from 4 actives to 12 actives and a spring pledge class of 6. The chapter also worked for the good of the community with blood drives and Halloween and Easter parties for underprivileged children. To celebrate Founders Day, the Brothers of Iowa Alpha placed white carnations on the grave of Ardivan Walker Rogers. Iowa Alpha is planning its fall rush program and is looking forward to another successful year.—**Paul Barnett**

and visit us at our handsome new home.—**Chris Lee**

#### KANSAS STATE UNIVERSITY

Kansas Gamma (1920), 508 Sunset Ave., Manhattan, KS 66502. Chapter Adviser - Max A. Beins, 2913 Dickens, Manhattan, KS 66502. Rush Chairman - Brad Razook, 508 Sunset Ave., Manhattan, KS 66502.

#### UNIVERSITY OF KANSAS

Kansas Alpha (1882), 1621 Edgehill Rd., Lawrence, KS 66044. Chapter Adviser - Mike Nelson, 639 Mississippi St., Lawrence, KS 66044. Rush Chairman - David Wiggins, 4507 W. 66th Terrace, Shawnee Mission, KS 66208.

#### WASHBURN UNIVERSITY

Kansas Beta (1910), Washburn University, Topeka, KS 66621. Chapter Adviser - K. David Hanzlich, 901 N. St., Belleville, KS 66935. Rush Chairmen - Tim Holmes/Tim Day, 1700 College, Washburn University, Topeka, KS 66621.

Kansas Beta has experienced a highly productive year. The members of this chapter have achieved excellence in all of their endeavors, as a chapter or as individuals. The chapter is well presented in campus activities, sports, and events. There are numerous Phi representatives on the student senate and IFC.

Currently the chapter is having an outstanding rush program which will give the chapter a better pool to select future members. A spiritual revival has been led in the chapter by brothers **Eldon Wenstrand** and **Tim Day** who remind the chapter of the importance of the spiritual aspects of Phi Delta Theta.

Kansas Beta has captured the intramural trophy for this year by sweeping almost every event. During the Greek Week activities, Kansas Beta took first in the track events with an excellent showing. We also danced away with second place in the skit/sing competition. The chapter also claimed first place in the Washburn phonathon and received a VCR for their efforts. The members remain dedicated to academic excellence and the G.P.A. is respectable.

Great efforts have been made towards reviving relations with the alumni. Kansas Beta is proud of the outstanding accomplishments of its alumni and encourages them to inform us of them. The production of an updated Alumni Directory is currently under consideration. If you are a Kansas Beta alumnus and have not already been contacted about this, please contact us.

#### WICHITA STATE UNIVERSITY

Kansas Delta (1959), 1750 N. Vassar Ave., Wichita, KS 67208. Chapter Adviser - Clark D. Jackson, 116 N. Glendale, Wichita, KS 67208. Rush Chairman - Greg King, 1750 N. Vassar, Wichita, KS 67208.

#### KENTUCKY CENTRE COLLEGE

Kentucky Alpha-Delta (1850), Box 756, Centre College, Danville, KY 40422. Chapter Adviser - Dr. William Garriott, Centre College, Danville, KY 40422. Rush Chairman - Michael Hall, R.#1, Box 79, Scottsville, KY 42164.

Every year the KY Alpha Delta chapter sponsors a run to Louisville to benefit the Cerebral Palsy School of Louisville. The run involved alternating runners pulling a rickshaw from Danville Kentucky to Louisville Kentucky (approximately 100 miles).

With the help of distinguished alumnus, **John Lenihan** and the Miller Brewing Co., we were able to raise over \$6,000 on our

run, thus making this the most successful year to date.

There are several members of the fraternity whose extra efforts have earned mention: **Doug Stough**, the overall director of the run, aided by transportation directors **Bill Hughes** and **Ray Scholtz**.

To raise the amount of money that we did, a rather large campaign was needed. First a newsletter describing the run and it's beneficiaries was sent to the parents of fraternity members and our alumni. About 60% of our total sum was raised here. Secondly, a letter was sent to other people around this area not directly affiliated with our chapter. Here 30% of the sum was raised. The last 10% of the total amount came from the town of Danville.

On behalf of Kentucky Alpha Delta and the Cerebral Palsy School of Louisville, we would like to thank all of those who helped make our undertaking such a success.—**Raymond McKinney** and **Bill Hughes**

#### EASTERN KENTUCKY UNIVERSITY

Kentucky Theta (1969), Student Activities Office, E.K.U., Richmond, KY 40475. Chapter Adviser - Dr. Ralph Thompson, 205 Stratford Dr., Richmond, KY 40475. Rush Chairman - Todd Shinkle.

The Kentucky Theta Chapter at Eastern Kentucky University enjoyed another strong year. The Phis made their mark academically, athletically, and in community involvement.

Academically, the Phis won IFC Grade Point Award again, the 24th time in 28 semesters. This includes 14 consecutive semester's covering seven straight years.

Athletically, the Phis repeated as campus champions in softball. The Phis bested last year's third place finish for All Sports Trophy by finishing a close second this year. The Phi Deltas also won the All-Greek Games relay.

Community involvement has always been of utmost importance to Kentucky Theta and this year was no exception. The Phi Deltas aided the Kentucky Jaycee's Pass, Kick, and Punt Competition Regional Finals at E.K.U.'s Hanger Field. The Phis sold painters' hats at all major E.K.U. events to raise over \$500.00 for a Richmond girl's heart transplant operation and \$200.00 for A.L.S. Kentucky Theta also participated in the Richmond Canned Food Drive and the Lion's Club annual fund raiser for the Blind.

Kentucky Theta also had the opportunity to travel to the Kentucky Epsilon chapter on March 31 to enjoy a fun-filled day of brotherhood.

The Phi Deltas pledged 25 men and are currently the second largest fraternity on campus.

#### UNIVERSITY OF KENTUCKY

Kentucky Epsilon (1901), 569 Woodland Ave., Lexington, KY 40508. Chapter Adviser - Ken Scroggins, 245 Lexington, Ave., Lexington, KY 40508. Rush Chairman - David Varney, 569 Woodland Ave., Lexington, KY 40508.

#### WESTERN KENTUCKY UNIVERSITY

Kentucky Eta (1966), 1260 State St., Bowling Green, KY 42101. Chapter Adviser - Billy T. Edwards, 720 Shawnee Way, Bowling Green, KY 42101. Rush Chairman - Joe Elder, 127 Dorchester, Louisville, KY 40223.

Kentucky Eta is a chapter on the move. In the course of the '83-'84 school year Kentucky Eta has reached Bond Number 300. Brother **Steven Schroader** is the man who proudly claims this Bond Number. **Steve** is a member of the 1983 Fall pledge

class. Besides acquiring this Bond Number, **Steve** received the highest GPA in his pledge class. Kentucky Eta is climbing higher.—**Christopher Meyer**

#### LOUISIANA STATE UNIVERSITY - BATON ROUGE

Louisiana Beta (1938), P.O. Box P.D., Louisiana State University, Baton Rouge, LA 70803. Chapter Adviser - Carl H. Stages, Jr., P.O. Box 23475, LSU, Baton Rouge, 70893. Rush Chairman - Patrick T. Donlon, 3867 Peachtree Ct., New Orleans, LA 70117.

The brothers of Louisiana Beta have just concluded a most outstanding year. With the growth of our alumni support, campus involvement, community service, and social calendar, we have established ourselves as a leader on the LSU campus.

Our year began with chapter house improvements, which paid off considerably when 14 new pledges walked through our doors. All were initiated, and they in turn helped to bring in 8 spring pledges, which have just recently signed the Bond.

Homecoming in the fall was our bragging point, as we won an award for our decorations. The spring semester saw our annual South Sea Island social, where brothers from all over the state, as well as surrounding areas, were able to toast the fraternity.

Community service saw our fund raising efforts go toward Muscular Dystrophy, by participating in swimming and football marathons. Collecting foodstuffs for the needy around the holiday season was also a priority, as well as activities with youngsters from a local deaf school.

Louisiana Beta has once again swept the intramurals competition, winning the fraternity division title for the 9th consecutive year!

Campus involvement continues, with Phi Deltas involved in LSU athletics, the IFC Executive Committee, student radio/TV/newspaper, honorary fraternities, and religious organizations, thus displaying the diversity of the chapter members.

Organization of our first chapter retreat has resulted in a better awareness of the short term/long term expansion goals. We have been nominated for the Gold Star Award, and hope we can bring some recognition back from the International Convention, held in our own back yard of New Orleans. The members are also looking forward to performing the opening and closing chapter meeting ceremonies at the convention.

Founders Day was only one of the opportunities to get together with our alumni. It was in this ceremony that we were able to induct two members into the Golden Legion. This was a time when everyone involved was able to see the "fraternity for life" aspect close-up and personal. Congratulations to these two men, as well as **Forrest E. Mills**, who was selected as "Alumnus of the Year." Much thanks go out to all the alumni, without whose help and support we couldn't hope to accomplish all that we have so far.

Stop by if you are in the area, and let the brothers of Louisiana Beta show you that good old southern hospitality from the Bayou State.—**David B. Frey**

#### LOUISIANA STATE UNIVERSITY - SHREVEPORT

Louisiana Delta (1979), % LSU-Shreveport, 8515 Youree Dr., Shreveport, LA 71115. Chapter Adviser - Michael D. Martin, 3601 Dee St., #1711, Shreveport, LA



**IOWA ALPHA:** To celebrate Founders Day, the brothers of Iowa Alpha placed white carnations on the grave of Ardivan Walker Rogers. The groups included FRONT ROW—Andy Brittle, Jim Golotko, Bret Drewelow, David Burris, Roger Raymie, Robert Hendricks, and Paul Barnett; SECOND ROW—Tony Cooley, Darren Lovell, Tim Foster, Mark Edwards, Joe Rivard, Lonnie Polhemus, Tim Mineart, and Andy Bentley. Photo by Chuck Sengstock





**KENTUCKY ALPHA-DELTA:** Each year the Kentucky Alpha Delta chapter sponsors a run to Louisville to benefit the Cerebral Palsy School of Louisville. The run featured alternating runners pulling a rickshaw from Danville to Louisville (approximately 100 miles). With the help of the Miller Brewing Company the chapter raised over \$6,000 this year.

71105. Rush Chairman - Lon Smith, 7463 S. Lakeshore Dr., Shreveport, LA 71119.

During the 1983-84 school year, Louisiana Delta spent considerable time and effort in improving our financial standing, our alumni relations and our community service.

Before our financial standing could be improved our books had to be straightened out and balanced. Thanks to our treasurer, **Dave Davis**, and a good accountant, our chapter records are in better shape than ever before. The chapter conducted several fund raisers throughout the year to increase our financial holdings. Efforts to promote on-time payment of membership dues has increased the bank balance and the chapter is very grateful to several alumni for their monetary contributions this year.

This semester marked an effort by LA Delta to improve relations with our chapter and area alumni. The chapter hosted several alumni gatherings and has established a regular bimonthly alumni newsletter. At this year's Founder's Day banquet we saw a larger number of alumni in attendance than we had ever seen before. The brothers of LA Delta are determined to see the alumni program grow even more this year.

Whether it was through playing wheelchair basketball, participating in a food drive or through an adopt-a-park program, our chapter has made a conscious effort to improve our community service. Because there is still much room for improvement in this area, our chapter is continuing to plan civic-related projects.

The following were initiated into the brotherhood during the 1983-84 school year: Bond #81 **Robert Webster Stewart**, Bond #82 **Henry Joseph Buck**, Bond #83 **Mitchell Erik Herrington**, Bond #84 **Ronald Granville Angus, Jr.**, Bond #85 **Todd Mitchell Rice** and Bond #86 **Jay Donald Smith**.

The following chapter awards were presented this year: **Scholarship Award**... **Ronald Angus, Jr.**, Most Athletic... **Allen Harris**, Pledge of the Year... **Todd Rice**, Officer of the Year... **Brent Gray**, and Phi of the Year... **Guy Mayer**.—**Brent A. Gray**  
**MAINE**

#### COLBY COLLEGE

Maine Alpha (1884), Colby College, Waterville, ME 04901. Chapter Adviser - Michael B. Twigg, 6917 Forbes Blvd., Seabrook, MD 20706. Rush Chairman - Daniel Miller, 4605 College Ave., College Park, MD 20740.

#### WESTERN MARYLAND COLLEGE

Maryland Beta (1971), Box 1219, Western Maryland College, Westminster, MD 21157. Chapter Adviser - Robert D. Friedman, 10330-B Malcolm Circle, Cockeysville, MD 21030. Rush Chairman - Jamie DeGrafft, Box 1219, Western Maryland College, Westminster, MD 21157.

#### MASSACHUSETTS

#### MASSACHUSETTS INSTITUTE OF TECHNOLOGY

Massachusetts Gamma (1932), 97 Bay State Rd., Boston, MA 02215. Chapter Adviser - J. Thomas Neu, 382 Marlborough St., Boston, MA 02215. Rush Chairman - Albert S. Yen, 97 Bay State

Rd., Boston, MA 02215.

Massachusetts Gamma started off the year with a strong rush of 12 pledge brothers—**Scott Baird**, **Eric Park**, **Paul Plucinsky**, **Gordon Long**, **Lowell Carson**, **Kapui Yip**, **Tony Colonna**, **Jay Mason**, **Howard Grider**, **Ken Roedel**, **Andreas Klein**, and **Jeff Mills**. The pledge class held a successful masquerade social at Halloween and dedicated a hard week to its pledge project which renovated many parts of the house. All twelve made it to initiation during the weekend of March 10 with flying colors.

We were honored by a large turnout of alumni at our Alumni Dinner in December. On November, we enjoyed the company of our brothers from the chapters of the Alpha and Beta provinces by hosting COAC.

This continued to be active in campus arts, sports, and activities this year. Notably, **Scott Davis** served as Cadet Commander of AFROTC, **Doug Kalika** performed with MIT's Concert Band, and **Jonathan Wyss** and **Andreas Klein** were instrumental to Shakespeare Ensemble productions. Phi Deltas dominated the fall and spring Bike Races at MIT, with individual performances of 1,2,3,5, and 6th at the spring event.

Under a large, devoted class of seniors, which was essential in the rewriting of the By-laws last year, a new pledge program was written. Members of our senior class are moving on to three Departments of MIT's Graduate School, two of Berkeley's, Univ. of Virginia's Medical School, and Stanford's Business School, as well as Hewlett-Packard, Booz Allen and Hamilton, and Applied Materials.—**J. Howard Grider**

#### MICHIGAN GENERAL MOTORS INSTITUTE

Michigan Delta (1964), 1160 Dupont St., Flint, MI 48504. Chapter Adviser - Richard H. Hillman, 11520 Ely Rd., Davisburg, MI Rush Chairman - Todd S. Applebaum, 1160 Dupont St., Flint, MI 48504.

The 1983-84 school year proved to be very successful for the brothers of Michigan Delta. Coming off a banner year of winning the Lubbock Trophy, Gold Star, and runner up in the Founders Trophy, we set high goals for the chapter and proceeded to exceed these goals.

Michigan Delta has amassed 1,690 hours of community service for the year, well surpassing last year's record-winning 1,380 hours. Some of these activities included: Flint Hurly-Dupont Neighborhood Watch Patrol, Urban Homestead Lottery Program with the city of Flint, United Way Fund Drive, and an annual zoo trip with the Little Brothers of Flint.

Our A-section basketball team captured the GMI A-Tourney for an unprecedented third straight year. After losing the first game, we ran off a streak of nine straight victories to capture the crown. B-Section captured the GMI Soccer Tournament, and are presently in the Finals again planning to retain our championship. Still to come is the GMI Softball Tournament which promises to be a banner year for the Phi Deltas.

This year has seen a dramatic growth in the membership of Michigan Delta. The initiation of 17 brothers in each section raised the total active membership to 85. In continuance with our past traditions of excellence, our social program proved itself beyond doubt. Michigan Delta hosted their Second annual Phi Delt Christmas Formal,

which proved to be a night to remember for everyone. Michigan Delta is looking forward to their observance of the Miami Triad with counterparts from Sigma Chi and Beta Theta Pi. Our first annual Oktoberfest social allowed the brotherhood to experience some German festivities, and other delicacies.

Michigan Delta wishes a happy retirement to our faculty adviser Brother **Robert Morris**. We thank him for his many years of dedicated service to Michigan Delta.

In closing, Michigan Delta congratulates all of their graduates this year and wishes them success in their professional careers. Michigan Delta has compiled many achievements this year, and are excited about the upcoming semester, which plans to be another banner year for Phi Delta Theta. I hope to see everyone at the 65th Biennial Convention in New Orleans.—**Darren P. Shelusky**

#### MICHIGAN STATE UNIVERSITY

Michigan Beta (1873), 626 Cowley Ave., East Lansing, MI 48823. Chapter Adviser - Ned S. Bearden, 851 Abbey, Birmingham, MI 48008. Rush Chairman - John Anderson, 3522 Wedgewood, Kalamazoo, MI 49008.

#### NORTHWOOD INSTITUTE

Michigan Epsilon (1983), Northwood Institute, Midland, MI 48640. Chapter Adviser - Robert Pierce, 1320 W. Carpenter, Midland, MI 48640. Rush Chairman - John D. Rice, 7320 Cliffgate Dr., Ft. Wayne, IN 46804.

Michigan Epsilon is very proud and excited about its rapid expansion and success during the 1983-84 school year, our first year as an active chapter. In a single year we have achieved more than we could have ever imagined.

Our 22 initiates during the year have helped us grow closer together and moved us towards the domination of our campus. We have attained such positions throughout the year as President of the Student Senate, **John Rice**; Secretary of Student Senate, **Jeff Kreitz**; President of Student Body, **Jerome Hack**; and Chief Justice of the School, **Bryan Cecilio**.

Our chapter was also active in athletics during the year. In the fall, we finished first among Greeks in a campus Triathlon. Our intramural teams have been very successful, and we have active involvement on the varsity football, basketball, and track teams, and also the hockey and soccer clubs.

During the year, the highlight of our community service projects was a "Las Vegas" night in which the proceeds went to a local Olympic speed skater hopeful. We also have several Brothers as active members of the Midland "Big Brothers" Association.

Academically, we are striving to place near the top among other organizations on campus. This year we had several Brothers named to Delta Mu Delta Honorary Fraternity. One of our top achievements which we are extremely proud of is being nominated for the "Silver Star" Citation during our first full year.

Our alumni support is growing, as we enjoyed sharing Founder's Day Dinner with these generous men.

This past year has been one of tremendous fun and success. We have met the challenges and have overcome them in high fashion. We wish the best of luck to our parting graduates, and especially to John Ariemma, founder of this chapter. We hold our heads high as we close out this year, and anxiously await the arrival of next year.—**Gregory Desmarais**

#### UNIVERSITY OF MICHIGAN

Michigan Alpha (1864), 1437 Washtenaw Ave., Ann Arbor, MI 48104. Chapter Adviser - Michael B. Lisull, 411 Orchard Hill, Ann Arbor, MI 48104. Rush Chairman - Pete Herrmann, 1437 Washtenaw, Ann Arbor, MI 48104.

Michigan Alpha began the semester this January by activating out 11 pledges from Fall term. Followed by a good rush which yielded nine new Phikeias, these 20 men have already strengthened our close brotherhood.

Our busy semester has resulted in a 2nd place IM sports finish, a strong finish in Greek Week and several very successful community service projects. This semester, Phi Deltas won the track relays and the water polo championship while also finishing strong in the swim meet (2nd place) and both A and B basketball tournaments. Only a few points kept us from repeating as IM champs and we'll be looking forward to recapturing the title next year.

Other great community service projects helped us to help others while having fun. Our 7th annual Orphan's Carnival with Kappa Alpha Theta was a big success. Great weather, carnival games, food and friendship above all gave us a great feeling when the day was over. Also, we co-sponsored a dance marathon with Kappa Alpha Theta, Alpha Phi Alpha, and Alpha Kappa Alpha. Held at our house, the event raised over 2,000 dollars for a local charity.

We now look forward to this summer and next fall. International convention in June, our summer chapter meeting weekend, and our Alumni Reunion Day golf outing will make this summer enjoyable. Next fall, our newly renovated bathrooms, new carpeting and other house improvements will help us show off our house on Homecoming Day—a day highlighted by the 50th annual Mudbowl football game, the oldest Homecoming tradition at the University of Michigan.—**Steven N. Smith**



**MINNESOTA BETA:** This at Mankato staged an Easter Egg hunt on Good Friday for the Big Brothers/Big Sisters program of the community.

#### MINNESOTA

#### MANKATO STATE UNIVERSITY

Minnesota Beta (1964), 520 James Ave., Apt. 104, Mankato, MN 56001. Chapter Adviser - Larry H. Wild, 613 Page Ave. N., Mankato, MN 56001. Rush Chairman - Scott J. Rosin, 128 Gwyn Ave., Mankato, MN 56001.

The Minnesota Beta chapter of Phi Delta Theta is small but there apparently is some truth to the old saying that "sometimes the best things come in the smallest packages." This hardworking chapter, currently numbering seventeen actives and four pledges, has had a number of successful community service projects this year.

For Halloween the chapter organized, sponsored and participated in a pumpkin carving activity with mentally handicapped residents. The activity was a huge success and received coverage in Mankato's city newspaper, the *Free Press*. This past Good Friday the chapter held an Easter egg hunt for children in the local YMCA Big Brother/Big Sister Program. This event, too, was a success as local grocery stores and candy companies supplied us with eggs and candy. In addition to the actual egg hunt, a number of games were played including an egg roll and an egg relay race. Prizes were given to the top finishers of the hunt and the other games. The event was held in a nearby city park. Media coverage was provided by radio stations, the local TV station, KEYC-TV, the *Free Press* and the Mankato State University student newspaper, *The Reporter*.

The Minnesota Beta's next major community service project will be held in May. It is the Phi Delt's biennial trampoline marathon for the American Cancer Society. This event has become a Phi Delt tradition here at Mankato State and has vast recognition and support from the community in general. The goal is to keep a trampoline in motion for 100 hours. Donations to the Cancer Society are sought from local and area supporters. In past years the chapter has raised over \$3,000 for the Cancer Society. The goal this year is for \$3,000.

These are just some of the community service projects to which our chapter devotes itself. As states previously Minnesota Beta is small and is in a time of rebuilding. Events like those mentioned can only help us attain our long range goal which is to become a large, active chapter involved in the community and the campus and one which operates under the principles established by the founding fathers.—**Bill Lass**

#### UNIVERSITY OF MINNESOTA

Minnesota Alpha (1881), 1011 4th St., S.E., Minneapolis, MN 55414. Chapter Adviser - Joseph G. Pasma, 2730 Randolph St. NE., Minneapolis, MN 55418. Rush Chairman - Todd Boomer, 1011 4th St., SE., Minneapolis, MN 55414.

#### MISSISSIPPI UNIVERSITY OF MISSISSIPPI

Mississippi Alpha (1877), P.O. Box 8167, University of Mississippi, University, MS 38677. Chapter Adviser - D. Graham Moulner, P.O. Box 8466, University, MS 38677. Rush Chairman - Arthur J. Waldrop, P.O. Box 8167, University of Mississippi, University, MS 38677.

#### MISSOURI

#### ST. LOUIS UNIVERSITY

Missouri Delta (1983), 919 Bellerive, St. Louis, MO 63111. Chapter Adviser - Barry Boehm, 3 Glen Creek Lane, Ladue, MO 63124. Rush Chairman - Stephen M. Noonan, 8022 Venetian Dr., Clayton, MO 63105.

#### UNIVERSITY OF MISSOURI

Missouri Alpha (1870), 101 Burnam Rd., Columbia, MO 65201. Chapter Adviser - L. Gale Bullock, 606 Medavista Dr., Columbia, MO 65201. Rush Chairman - Brad Young Jim Hagemester, 1613 Standford Dr., Columbia, MO 65201.

At the beginning of this school year, Missouri Alpha had four major goals in mind that we were wanting to accomplish. These goals were improving scholarship, campus relations, financial standing, and alumni relations.

As you know, scholarship is the main reason why we are here. After a disappointing showing in grades last year, finishing 17th overall, we made a jump to 7th this year as an overall chapter while the pledges ranked 3rd among the pledge classes. This was due to an improved study atmosphere

for the pledges as well as the actives.

This fall we held our 5th annual Mid-night Dash, which is a run through the University of Missouri campus. For this project we were accompanied by the Kappa Kappa Gamma sorority. There were about 200 runners who braved the cold rainy night to run for prizes and a worthy cause. The money was donated to the United Way. However, we are hoping to change a few things in the structure of this project to bring more success in the future.

In March of 1984 we held our first annual A.L.S. 3-man half court basketball tournament. This project was a major undertaking and needed much time, energy, and effort. In its first year, the tournament was a success. Hopefully the foundation has been laid for the years to come to insure success for a very worthy cause.

The financial status of any chapter is very important. Missouri Alpha's financial state has proved to be sound and in capable hands. The house corporation has changed the format for collecting housebills. There are now 8 monthly payments instead of just 6 and five of these housebills will be collected in the fall. There is also a sinking fund set up by the house corporation for emergencies.

The alumni relations has really improved. With the help of some Columbia alumni and hiring a fund raiser, we are trying to bolster an alumni fund raising program, to maintain alumni interest.

I feel Missouri Alpha has accomplished or at least made a step in the right direction in accomplishing its goals made at the start of the year.—**Steve Green**

#### WASHINGTON UNIVERSITY

Missouri Gamma (1891), #8 Fraternity Row, St. Louis, MO 63130. Chapter Adviser - Peter D. Kelley, 3019 Shenandoah St., St. Louis, MO 63104. Rush Chairman - Dan Sutton, #8 Fraternity Row, St. Louis, MO 63130.

#### WESTMINSTER COLLEGE

Missouri Beta (1880), Box 292, 500 Westminster Ave., Fulton, MO 65251. Chapter Adviser - John D. Blattner, 528 Court St., Fulton, MO 65251. Rush Chairman - S. Robert Granter, Jr., 4910 Mill Run Rd., Dallas, TX 75234.

The Brothers of Missouri Beta of Phi Delta Theta have experienced another eventful year. By raising money through various chapter functions such as an annual slave auction, we again captured the E. C. Slick Henderson United Way Award for the eighth consecutive year.

Our annual Christmas Party with the children attending the Missouri School for the Deaf was a success. This year we had our first annual Dad's Weekend which proved to be quite successful. The weekend was headed by seniors **Jeff Davis** and **Steve Pontius**. This year's pledge class performed very well scholastically, and we initiated seventeen out of twenty-three in their class.

There were several individual achievements by Brothers attaining positions in the various student-governing organizations of Westminster. **Bob Granger** (86) was elected vice-president of the Student Government Association. **John Jamison** (85) was elected as Inter-Fraternity Council Treasurer. **Calvin Downing** (85) was selected as next year's Grand Marshall of the Skulls of Seven, an honorary society for outstanding seniors at Westminster. Brother **Downing** also acted as co-chairman for the Second Annual Student Alumni Telefund which helps raise funds for the general operation of the school. **Judd Martin** (85) was also selected as a member of the Skulls of Seven. **Mark Miller** (85) has a position of Westminster's Honor Commission and was also elected vice-president of the Beta Beta Beta honorary biology fraternity. Brothers **Carl Copek** (85) and **Tom Krause** (85) were awarded the position of editor of the yearbook and college newspaper, respectively.

Our House Corporation is going to begin the first part of a major renovation of the Chapter House. This multi-year project will encompass everything from new plumbing and fixtures in the bathrooms to a complete electrical system overhaul.

The Brothers at Missouri Beta are also proud to announce their officers for the Fall Term of 1984: President **Calvin Downing** (85), Vice-President **Mark Miller** (85), Secretary **Tom Evans** (85), Treasurer **David Fisk** (86), Rush Chairman **Bob**



**Granger** ('86), Alumni Secretary **Todd Wilson** ('87), Scholarship Chairmen **Judd Martin** ('85) and **John Rollins** ('87), Awards Chairman **Tim Harris** ('87), Librarian **Mark Caplinger** ('87), Chorister **Bill Vogt** ('87) and Pledge Trainer **David Fisk** ('86).—**Thomas S. Evans**

#### MONTANA UNIVERSITY OF MONTANA

Montana Alpha (1920), 500 University Ave., Missoula, MT 59801. Chapter Adviser - Richard W. Owens, 1605 Snow Bowl Rd., Missoula, MT 59801. Rush Chairman - James T. Johnston, 500 University Ave., Missoula, MT 59801.

Montana has experienced a year of many improvements. The physical structure has undergone many renovations. With alumni contributions Montana Alpha has insulated and reroofed the house. We have also been able to recarpet our hallways.

The chapter size has also increased. We pledged 24 men with 19 being initiated. There are 30 members living in and we hope to increase that to full capacity (34) this fall.

Through out various activities we have taken time out to help both the community and the University of Montana. Red Cross has benefitted from a couple of Phi Delt blood drives. The children's theatre received help on casino night.

The brothers of Montana Alpha have also remained active on campus. The chapter boasts three members on student government. They are **Matt Hense**, **Bud Desmul**, and **Thornton Johnson**. For the fourth straight year a Phi Delt has been named homecoming king. This year's king was **Matt Hense**. The brothers have also been responsible for the University's victory bell and the grizzly mascots. The Phi Delt is also in the lead for the university all-sports trophy.

Montana Alpha is also in the midst of an alumni fund drive. To kick off the drive, the active chapter hosted a reunion for the classes of 1920-1942. More than 87 alumni attended. Now with alumni support and a strong house, Montana Alpha is going strong.—**Bob Butler**

#### NEBRASKA KEARNEY STATE COLLEGE

Nebraska Beta (1966), 521 W. 25th St., Kearney, NE 68847. Chapter Adviser - Richard Barlow, 711 West 28th, Kearney, NE 68847. Rush Chairman - Les Peterson, 521 W. 25th St., Kearney, NE 68847.

Another busy year has passed us at Nebraska Beta of Kearney State College. Once again Community Service was our primary thrust as we are striving for our second consecutive Community Service Trophy. From our Adopt-A-Grandparent program to sponsoring a Blood Donation Day with the Red Cross held on campus.

Our Chapter & Annex are taking on a new look with restoration in the chapter house kitchen facilities and the annex's fire damaged room. We greatly appreciate the cooperation and support from the college by providing rooms for those brothers who were left homeless.

Phi Delt's were active on campus organizations and sports throughout the year. They include: Varsity Sports: Baseball: **Todd Glandt**, **Scott Gardner**, **Todd Johnson**, Golf: **Randy Zerzan**, **George Karhoff**, Football: **Chad Kuhnelt**, **John Hamilton**, **Brian Murphy**, **Walt Hilger**, Wrestling: **Scott Bohlken**. Drama: **Joel Agena**, **Brian Hamburger**; Student Senate: **Brett Wall**, **Phil Ross**, **Mark Frantz**; Other organizations: Student Alumni Board, Phi Beta Lambda, National Student Exchange, Second place in Greek Dazes Competition.

In closing we would like to thank, once again, our brothers of South Dakota Alpha for their outstanding fraternity fellowship.

#### UNIVERSITY OF NEBRASKA

Nebraska Alpha (1875), 1545 "R" St., Lincoln, NE 68508. Chapter Adviser - Randal L. Raymond, Suite 880, NBC Center, Lincoln, NE 68580. Rush Chairmen - Mike Harvey/John Sullivan, 4210 Fran, Lincoln, NE 68516.

Nebraska Alpha members participated in the American Red Cross Blood Drive and several other campus wide activities for charity. The entire chapter donated their time in renovating the local zoo. The Lincoln Jaycees fully supported our effort. Other projects included the planning of a picnic with the Cedars Home for children.

Next year's projects promise to be even greater.

#### NEVADA UNIVERSITY OF NEVADA

Nevada Alpha (1972), 735 West St., Reno, NV 89503. Chapter Adviser - Timothy K. Burke, 5795 Mt. Rose Highway, Reno, NV 89511. Rush Chairman - Danny Chang, 735 West St., Reno, NV 89503.

#### NEW HAMPSHIRE NEW HAMPSHIRE COLLEGE

New Hampshire Beta (1983), Box A-38, 2500 N. River Rd., Manchester, NH 03104. Chapter Adviser - J. Richard Eagan, 9 Ross Dr., Londonderry, NH 03053.

#### NEW YORK COLGATE UNIVERSITY

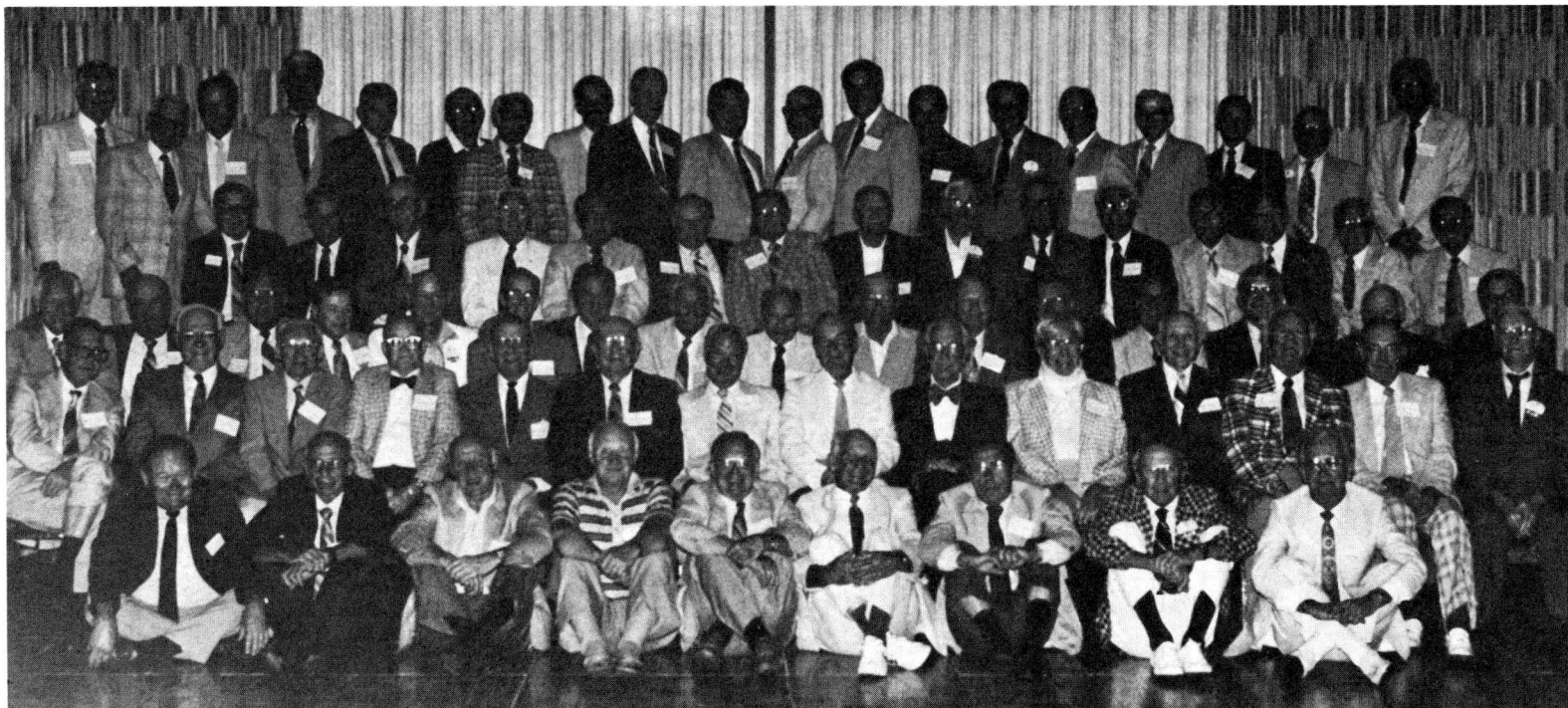
New York Zeta (1918), P.O. Box 353, Hamilton, NY 13346. Rush Chairman - Jay Hirt/Carl Rice/Joe Curl, P.O. Box 353, Hamilton, NY 13346.

#### CORNELL UNIVERSITY

New York Alpha (1872), 2 Ridgewood Rd., Ithaca, NY 14850. Chapter Adviser - James N. Hauslein, 1406 Hanshaw Rd., Ithaca, NY 14850. Rush Chairman - Peter Bell, 2 Ridgewood Rd., Ithaca, NY 14850.

#### SYRACUSE UNIVERSITY

New York Epsilon (1887), 703 Walnut



**MONTANA ALPHA:** The chapter hosted a reunion for the classes of 1920-1940 last summer. More than 87 alumni registered for the event. The gathering included:

**BOTTOM ROW**—Jack Dowling, Tom Regan, Jon Fleming, Harold Garnass, K. R. Schwanke, Geno Fopp, Warren Vaughan, Tom Mitchell, Burke Thompson; **SECOND ROW**—Carl Zurmuehlen, Elliott Busey, Lloyd Callison, Otto Bessey, John Allen, Herman Stark, Carl Dragstedt, Herb Larsen, Gordon Rognlien, James Dion, George (Jiggs) Dahlberg, Tom McCarthy, Tom Davis, Claude Johnson; **THIRD ROW**—William Andrews, Lloyd Skedd, Joe McElwain, James Haviland, Joe Ball, Wm. (Bill) Erickson, Bob

Ave., Syracuse, NY 13210. Chapter Adviser - Richard M. Roberts, 127 Houston Ave., Syracuse, NY 13210. Rush Chairman - Jay Rule, 115 Miner St., Middletown, CT 06457.

As the spring semester drew to a close, the New York Epsilon chapter of Phi Delta Theta celebrated its 97th Founder's Day April 18.

Highlighting the event, which attracted about 50 active brothers and alumni was Syracuse University Vice-President for International Affairs **Goodwin Cooke**. **Cooke** who has held his post at SU since 1983, is a former ambassador to the Central African Republic and worked in the United States State Department for 25 years before coming to SU.

Other highlights of the semester included a community service project involving the Syracuse Chapter of the Boys Club. About 20 youths attended a softball game and cookout April 28.

The chapter house also underwent renovation during the semester and additional work is planned for next fall.

#### UNION COLLEGE

New York Beta (1883), 1175 Lenox Rd., Schenectady, NY 12308. Chapter Adviser - Dr. Willard D. Roth, Union College, Schenectady, NY 12308. Rush Chairman - Mike Barrett, 1175 Lenox Rd., Schenectady, NY 12308.

#### NORTH CAROLINA DAVIDSON COLLEGE

North Carolina Gamma (1928), Box 673, Davidson, NC 28036. Rush Chairman - Scott Brendle, R.#1, Box 153, Yadkinville, NC 27055.

#### DUKE UNIVERSITY

North Carolina Alpha (1878), Box 4693, Duke Station, Durham, NC 27706. Chapter Adviser - R. Dennis McMahon, 1215 Snowhill Rd., Bahama, NC 27503. Rush Chairman - John L. Frost, Box 4693, Duke Station, Durham, NC 27706.

#### UNIVERSITY OF NORTH CAROLINA

North Carolina Beta (1885), 304 S. Columbia St., Chapel Hill, NC 27514. Rush Chairman - Will Hardison, 1300 Scotland Ave., Charlotte, NC 28207.

#### NORTH DAKOTA UNIVERSITY OF NORTH DAKOTA

North Dakota Alpha (1913), 601 Princeton St., Grand Forks, ND 58201. Chapter Adviser - Ronald M. Johnke, 2702 Olive St., Grand Forks, ND 58201. Rush Chairman - Douglas Montgomery, 2490 W. Country Club Dr., Fargo, ND 58103.

The North Dakota Alpha Chapter of Phi Delta Theta has had a very active school year. Our activities began with a celebration of UND's centennial held during Homecoming festivities. Over 200 alumni returned to campus and the house for the event.

We have initiated 30 new actives into the bond of Phi Delta Theta this past year and we look forward to rush this fall.

Our Founder's Day was held in conjunction with Parent's Day in March.

As school closing for the summer draws near, members look forward to a restful and enjoyable summer.—**Ken Halliday**

#### OHIO ASHLAND COLLEGE

Ohio Mu (1933), 660 Broad St., Ashland, OH 44805. Chapter Adviser - John K. Lundgren, 133½ S. Market St., Loudonville, OH 44842. Rush Chairmen - Dave Wyckoff, 2944 Ewing Rd., Burbank, OH 44214. Jim Lee, 660 Broad St., Ashland, OH 44805.

The 1983-84 academic year has been one of continued growth and excellence in membership and participation for Ohio Mu with over 96 percent of the brotherhood involved in some sort of campus activity.

In athletics **Dave Maiorana** earned N.C.A.A. Division II All-American wrestling honors while sophomore **Rob Juer-**

**gens** qualified for nationals in track for two running events after being awarded Most Valuable Player at this year's Heartland Conference track meet.

Academically, Ohio Mu is currently above men's grade point with a 2.8 average. Brother **Jim Lee** was named Greek man of the year. While **Tim Edwards** was awarded the Ohio Mu Brotherhood award.

The men of Ohio Mu enjoyed a great time this year with our alumni weekend. Alumni from the past 18 years came and participated in creating a stronger sense of brotherhood from past to present, and shared in the many renovations in the house which include a new wood floor and bar in the dining room, also new lights and pictures in the living room.

Through the leadership of our newly elected officers: **David Maiorana**, president; **Terrence Fain**, vice president; **Timothy Sherman**, secretary; and **Robert Strickland**, treasurer, Ohio Mu looks forward to another year of promoting the teachings of the Bond of Phi Delta Theta at Ashland College.—**Terry Fain** and **Tim Sherman**

#### BOWLING GREEN STATE UNIVERSITY

Ohio Kappa (1950), 507 E. Merry St., Bowling Green, OH 43402. Chapter Adviser - Mark Trimble, 2423 S. Holland, Sylvania Rd., Apt. 216, Maumee, OH 43636. Rush Chairman - George Duffield, 507 E. Merry St., Bowling Green, OH 43402.

#### CASE WESTERN RESERVE UNIVERSITY

Ohio Eta (1896), 2225 Murray Hill Rd., Cleveland, OH 44106. Chapter Adviser - David H. Rush, 134 Lakeview Lane, Chagrin Falls, OH 44022. Rush Chairman - Mark Kryah, 2225 Murray Hill Rd., Cleveland, OH 44106.

#### DENISON UNIVERSITY

Ohio Iota (1914), 3 Fraternity Row, Granville, OH 43023. Chapter Adviser - Dr. Fred Preston, Box 267, 120 E. Elm St., Granville, OH 43023.

Lacklen, Frank Flynn, Robert Bates, Max Ennis, Dan Nelson, Joe Clemow, Fred Moulton, Wayne Peterson, Lou Landstrom, Jack Hoon; **FOURTH ROW**—George Sarsfield, Frank Stanton, Jim Sonsteli, Robert Newell, Glenn Hostetter, John Delano, Bob Zepp, Red Bryan, John Campbell, Dale Galles, Willis Haskell, George Rathert, Dave Veseley, John Weaver, Leonard Langen; **FIFTH ROW**—R. H. "Ty" Robinson, Merth Thompson, Quentin Johnson, Cal Robinson, Ed Holland, George Flynn, Dick Larsen, Bessey, Jr., Foy Priest, John Patterson, Ralph Wanderer, Wm. Baucus, Paul Chumrau, Rudy Merhar, Lyman Clayton, Frank Shaw, Robert Lathrop, Einar Lund, John Baucus.

#### MIAMI UNIVERSITY

Ohio Alpha (1848), 102 N. Tallawanda, Oxford, OH 45056. Chapter Adviser - Capt. Robert Harp, 6325 Brown Rd., Oxford, OH 45056. Rush Chairman - Eric Stegmeyer, 25333 Greenbrooke, Southfield, MI 48004.

The brothers of Ohio Alpha enjoyed a very successful year, highlighted by the initiation of 22 fine men on April 20.

They include: **Chris Aschinger**, **Tom Caldwell**, **Brent Combs**, **Mike Helmuth**, **Marty Igel**, **Jim Post**, Columbus; **Bob Fitzpatrick**, **Marty McGrory**, **Jay Reinhold**, **Jim Ryan**, **Pete Scheu**, Cincinnati; **Tim Gottfried**, Elyria; **Andrew Hanscom**, South Euclid; **Jim Blythe**, Hudson; **Ed Gill**, **Tom Underwood**, Tallmadge; **Josh Friedman**, Chicago; **Jim Winslow**, Darien; **Doug Vandevelde**, Libertyville; **Ken Boie**, Lake Oswego, Oregon; **Rick Finley**, Greenwich, Rhode Island; **Brian Bock**, Layton, Utah; **Bob Frentzel**, Milwaukee, Wisconsin; **Todd Wisialowski**, Wheeling, West Virginia; and **J.B. Ryan**, Saint Louis, Missouri.

Several house improvements were made this year, the purchase of an ice machine, new furniture for our chapter room, and the completion of our living room arrangement. In the community, Ohio Alpha helped out with special olympics, organized Christmas carolling for underprivileged children, and donated the most blood in the interfraternity blood drive. Our athletic season this year was capped off by an all campus victory in both soccer and tennis.

Officers for next year include: **Steve Rex**, president; **Jim Kelly**, vice president; **Mike Ryan**, vice president; **Joe Hogenkamp**, treasurer, **Tom Diehl**, member at large.—**Steve Rex**

#### OHIO STATE UNIVERSITY

Ohio Zeta (1883), 1942 Luka Ave., Columbus, OH 43201. Chapter Adviser - Thomas R. Panek, 103 Riverview Park, Columbus, OH 43214. Rush Chairman - John G. Alexander, 333 Acton Rd., Columbus, OH 43214.

#### OHIO UNIVERSITY

Ohio Gamma (1868), 22 N. College St., Athens, OH 45701. Chapter Adviser - Mitchell T. Swain, Apt. E, 41 Mill St., Athens, OH 45701. Rush Chairman - Tyrone Swain, 30 Sylvan Way, Marietta, OH 45750.

#### OHIO WESLEYAN UNIVERSITY

Ohio Beta (1860), 19 Williams Drive, Delaware, OH 43015. Chapter Adviser - Jeffrey W. Fruit, 149 Oak Hill Ave., Delaware, OH 43015. Rush Chairman - Dan Zecha, 19 Williams Drive, Delaware, OH 43015.

#### UNIVERSITY OF AKRON

Ohio Epsilon (1875), 194 Spicer St., Akron, OH 44304. Chapter Adviser - Chris Helmkamp, 3076 Bancroft Rd., Akron, OH 44313. Rush Chairman - Bill Milford, 194 Spicer St., Akron, OH 44304.

The past year has been a good one for the brothers of Ohio Epsilon at the University of Akron. This past year our chapter was nominated for the chapter Improvement Citation. Our pledges had the highest grade point average of any fraternity on campus.

This past fall we initiated fifteen men including five legacies each having at least two relatives who are Phi's. We won the Delta Gamma Anchor Splash with nearly twice the points of the nearest competitor. The Anchor Splash team was led by the efforts of freshman **Eric Smith**, who is a varsity swimmer. **Eric** broke numerous school records during his first year at the university.

The Verlin P. Jenkins Memorial Scholarship was given for the second time at our annual founders day luncheon April 20, at the University Club. The winner was senior **Thomas Menyes**, chapter treasurer and president elect of the active chapter. **Tom** was a runner-up for the scholarship last year. The scholarship covers all tuition, fees and books. It was established two years ago in memory of our late Sigma province president, **Verlin P. Jenkins**, who



**OHIO ALPHA:** Ohio Alpha's all-campus soccer champions include: **STANDING**—Jim Ryan, Ernie Defoy, Jim Kelly, Rob Mullin, Todd Wisialowski, Pete Scheu, Jim Winslow; **KNEELING**—Dave Shedloski, Mike Capra, Ben Sergi, Jeff Illis, and Chris Lewin.



was from our chapter. In just two years the principle has grown to over \$10,000. The runners-up for the scholarship were brothers **Oestreicher** and **Salisbury**. Others applying were brothers **Neal** and **Sekicky**. The speaker at the luncheon was Iowa Phi **Del Donahoo** from the Cleveland NBC affiliate, WKYC-TV channel 3. **Del** is known for his "Del's Folks" human interest features from all around northeastern Ohio. We had a good year and think that next year will be even better.—**William R. Milford**

#### UNIVERSITY OF CINCINNATI

Ohio Theta (1898), 2718 Digby Ave., Cincinnati, OH 45220. Chapter Adviser - James D. Ball, 6255 Savannah, Cincinnati, OH 45224. Rush Chairman - Bernie Huelsman, 2718 Digby Ave., Cincinnati, OH 45220.

This past year for Ohio Theta has been one of transition and projection toward the future. The recent trend of dry rush that has already been dealt with by other chapters became the first of many changes that the chapter would come across during the upcoming year.

With a lot of determination and hard work the chapter managed to get 14 pledges, 5 of which were initiated in the winter. Dry rush was also in effect during spring rush when the chapter added 5 pledges. The addition of these 10 men will allow the chapter to remain at a membership of 60 members with the loss of 8 seniors in June. This means that the nucleus of the chapter will return next year as juniors and seniors.

With the chapter beginning to grow in numbers it finally became apparent that physical growth of the chapter house would be necessary in order to keep up with the rest of the U.C. greek system. After months of research and discussion led by the House Corp. President **Paul Krone**, results are becoming increasingly noticeable. The main project of the House Corp. is to purchase the house next door, and do major renovation to the existing house. This move will make the house more attractive to rushmen.

All of this progress and hope for the future would not be possible without the help of our advisers, **Rick Newman**, financial adviser, and **Jim Ball**, chapter adviser. They have worked long hard hours to help us with our financial troubles and our organization. There was also a lot of help given to the chapter by **Don Melchiorre**, commissary adviser. Don not only helps out in the kitchen but he also tries to keep us straight with his words of wisdom. The chapter would also like to thank **Paul Krone** for his dedicated work with the rest of the House Corp.—**Thomas E. DeWees**

#### OKLAHOMA STATE UNIVERSITY

Oklahoma Beta (1946), 223 S. Monroe, Stillwater, OK 74074. Chapter Adviser - Gary Boyer, 2801 Field Crest Drive, Ponca City, OK 74601. Rush Chairmen - Jim Mena/Noel Kirch, 223 S. Monroe, Stillwater, OK 74074.

The 1983-84 academic year has been one of trial for the men of Oklahoma Beta. On July, 21, 1983 the main chapter house was destroyed by fire. Due to this disaster the brothers have been forced to occupy the chapter's apartment annex and an old Spanish house, with some members even living out of house.

Although numbers are down and there has been financial strain on the members, morale has remained extremely high. It seems that this crisis has brought the brothers even closer together, even though they live apart. The result of the long hours of work by the chapter's building corporation was evident on April 14, 1984 as the Phi's of Oklahoma State celebrated their formal ground breaking for their new house. This event was immediately followed by the chapter's annual rush program which was an extremely successful event. The summer rush looks very promising and the brothers are all looking forward to the next year with enthusiasm.

In the past year men of Oklahoma Beta have had to work hard due to their separate living quarters. Despite this inconvenience the brothers have remained active in service projects such as a March of Dimes Against Birth Defects, participating with the chapter's E.G.O.'s. Also, the chapter has remained strong in athletics, placing high in football and making an extremely strong showing at the greek boxing tournament.

The men of Oklahoma Beta have already begun gearing up for an all out comeback with the construction of their new house. Next year will be one of hard work and growth as the brothers strive to return to their seat as a leader on the campus of Oklahoma State University.—**Eric Hillerman**

#### SOUTHWESTERN STATE UNIVERSITY

Oklahoma Gamma (1971), 914 N. Illinois, Weatherford, OK 73096. Chapter Adviser - Martin D. Lockstone, 712½ N. 7th, Box 547, Weatherford, OK 73096. Rush Chairman - Jimmie Arnold, 914 N. Illinois, Weatherford, OK 73096.

#### UNIVERSITY OF OKLAHOMA

Oklahoma Alpha (1918), 1400 College Ave., Norman, OK 73069. Chapter Adviser - Arthur F. Hoge, III, 1800 Mid-America Tower, 20 N. Broadway, Oklahoma City, OK 73102. Rush Chairman - John Cox, 1400 College Ave., Norman, OK 73069.

In September the Brothers of Oklahoma Alpha initiated six men and in March 17 more were initiated. This brings our total membership up to 1,611 since our founding.

Academically our grades were fourth out of 24 fraternities at OU during the fall semester. Intramurally we finished third overall. We placed at least one team in the playoffs for every sport. Brothers **David Confer**, **Todd Hollar**, and **Stewart Leonard** made the All-Greek football team and **Steve Jantz** made the All-Greek basketball team. Our Golf team of **Curtis Howard**, **Rob Park**, **Jeff Ross** and **Rick Webb** easily won the championship.

Congratulations to **Kevin S. Smith** for being named to the Top Ten Greek Men. The newly elected officers are: **Mike Richmond**-president, **Chris Howard**-vice president, **Jim Brock**-secretary, **George Emerson**-historian, **Greg Krumme**-social chairman, **Rob Park**-treasurer, **John Cox**-rush chairman, **Stewart Leonard** and **Wes Byrd**-assistant rush chairman, **Michael Manley**-house manager and **Doug James**-scholarship chairman.

We have been very active over the year in campus activities. **Kevin Smith** was IFC Secretary and **Hal Weisbein** was on the IFC intramural committee. **Mike Richmond** was chairman of the Greek Week Awards Committee and **Allan Muchmore** was on the Greek Week Sports committee. **Steve Dahlem** played the lead in the campus production of 'West Side Story' and **Jeff Slater** received a ROTC scholarship and will be attending Airborne School this summer. **George Emerson**, **Ben Schmidt**, **Shelby Bush**, **Joel Hall**, **David Confer** and **Greg Krumme** became charter members of the new Phi Alpha Delta Pre-law Fraternity. These are just a few of the activities that we have become active in this year and next year looks very promising for Phis on campus.

Over the summer the Chapter House is scheduled to get a new roof and central air-conditioning. The Chapter Room is also going to be redone. Thanks to the Housing Corporation and our Alumni for making this renovation possible.—**George Emerson**

#### OREGON INSTITUTE OF TECHNOLOGY

Oregon Delta (1982), 3949 Shasta, Klamath Falls, OR 97603. Rush Chairman - Jeff Sanders, 1576 Stevens Rd., Eagle Point, OR 97524.

The Oregon Delta Chapter of Phi Delta Theta in Klamath Falls has moved into a new house. And in the near future we hope to build a new house.

Our small but growing chapter has had some hard knocks this last year getting moved and dealing with some severe financial problems, but we believe our struggle has only made us that much more durable and strong.

We would also like to give some credit where it is most certainly deserving. **Erin Haynes**, Pi South Province President, has been very helpful and instrumental in the fight for our chapter to make it through the tough times. This Brother Phi was always ready to come and visit when we had a question or needed assistance. Phi Delta Theta is very fortunate to have such a man among its ranks.

Oregon Delta as we have said has had some tough times recently, and we may have to weather a few storms even yet. Be certain however that Oregon Delta is here to stay, and the men that first put this chapter on its feet can be sure that it will always remain so. To the Alumni of Oregon Delta, you have our pledge that your chapter is now on the move forward to bigger things to come. Look for a notice in the mail soon for a new and upcoming Alumni Association of Oregon Delta.—**Anthony B. Thomas**

#### OREGON STATE UNIVERSITY

Oregon Beta (1918), 120 N.W. 13th, Corvallis, OR 97330. Chapter Adviser - Erin Haynes, 2395 N.W. Green Circle, Corvallis, OR 97330. Rush Chairman - Craig Ramey, 120 N.W. 13th, Corvallis, OR 97330.

The Phis at Oregon Beta experienced a very rewarding year. We began the year with a successful formal rush and a fine pledge class. Our 32 formal pledges proved to be very talented. Today, 26 of our 32 formal pledges are now Phis. These new initiates immediately became involved in the chapter and on campus. Although we had only six seniors, they provided the chapter with a great deal of leadership.

Oregon Beta continued to excell in academics. Among the 28 fraternities at OSU, we placed fourth and sixth in grades Fall and Winter term.

Despite moving up to the top intramural fraternity league this year, we still enjoyed a strong performance. We are currently in third place overall, with high placings in volleyball, waterpolo, swimming and golf.

Phis were prominent on student councils, honoraries and athletics for the University. Many brothers participated in baseball, football, lacrosse, golf and rugby for OSU.

The chapter remained busy in community service projects on and off campus. On campus, we participated in the OSU Foundation's Telefund to raise money for the University. Off campus, brothers were active in general public park clean-ups and repairs.

Oregon Beta continued to receive strong support from our chapter adviser and alumni. We would like to thank alumni for their generous donations and company during homecoming. The house corporation, Kappa Sigma Nu, did an excellent job in coordinating remodeling projects on the house.—**Dave T. Renner**



OREGON ALPHA: Brothers at Oregon Alpha spent 160 hours this winter spreading barkdust over the campus for fertilizing purposes.

#### UNIVERSITY OF OREGON

Oregon Alpha (1912), 1472 Kincaid, Eugene, OR 97401. Chapter Adviser - David G. Evans, 111 S.W. Columbia St., Portland, OR 97201. Rush Chairman - Andy Fraser, 1472 Kincaid, Eugene, OR 97401.

The chapter of Oregon Alpha at the University of Oregon is strong and on the move. We acquired 24 new pledges in the recent spring rush held on campus. We led the entire campus in this area and plan to do the same in next falls formal rush.

Over Christmas holidays the Oregon Alpha house suffered extensive damage from broken water pipes caused by unusually cold weather. The brothers came back to school early to deal with the situation. Within a few weeks the house had been restored and is now looking better than it ever has.

In academics Oregon Alpha was second winter term among fraternities (15) and fifth compared to overall living organizations (26). Oregon Alpha has always stressed strong academic work, which has always been a hallmark tradition of Phi Delta Theta.

April being Phi Delta Theta community service month meant a busy calendar for Oregon Alpha. We donated over 160 man hours to the University spreading barkdust over the campus. Already this year we have participated in the Universities Telefund raising money for underfunded areas of the school such as the Library. Early in the year we raised money for handicapped children to enable them to attend the Shrine Circus when it was in Eugene this winter. Later this year we will be sponsoring an all-greek blood drive. Also we will be having an all-greek street dance to raise additional funds for the University. We invite all alumni to stop by the house if you ever find yourself in Eugene.—**David J. Martin**

#### WILLAMETTE UNIVERSITY

Oregon Gamma (1946), Willamette University, Salem, OR 97301. Chapter Adviser - Kevin E. Smith, 3318 Blanchet NE, St. Paul, OR 97137. Rush Chairman - Bill Waechter, Willamette University, Salem, OR 97301.

In the Spring Semester (84) 17 new members signed the Bond, which include **William S. Ayres**, **James D. Brooks**, **Jeff Curran**, **Roy Kevin Dowling**, **William Kirk Fowler**, **Mark E. Handris**, **Scott P. Healy**, **Terry P. L. Kruger**, **Johnnie Reed**, **Roger H. Reid**, **Il. Dean Scacco**, **James D. Stow**, **Brett S. Sullivan**, **Randy A. Sullivan**, **Mathew F. Stashin**, **Jerry Varner**, and **John E. Weigand**.

In alumni news the annual golf tournament and alumni dinner brought together the old as well as the new members at Oregon Gamma. **Doug Peake** (1979) won the Tournament while brother **Brett Sullivan** dove for lost golf balls in several lakes.

Equally successful for Oregon Gamma were the community service projects which included: Senior Citizens workday, YMCA book drive, American Red Cross Blood drive, and city of Seaside Community relations weekend. Additionally, Oregon Gamma held Fifth Annual Air Guitar donating proceeds to Shangrila, home for the mentally retarded.

In athletics 27 Oregon Gamma Phis participated at the varsity level. In football **Chris Bingham** earned Academic All-American honors, and **Randy Sullivan** was selected to the NAIA All-Conference team. Sophomore All-American's **Todd Hagen**

and **Brian Rasmussen** again qualified for the NAIA national swim meet, while hoopsters **Carlos Gilyard**, **John Petrie**, **Derek Dodge**, **Geoff Johnson**, and **Matt Colbern** took the court for the Bearcats.

For the third year in a row Oregon Gamma captures IM weight lifting, track, cross country, and bike race.

Scholastically Oregon Gamma had a chapter GPA of 2.927. **Brad Butler** was accepted to Tulane School of Medicine and **Brent Boyer** is an alternate selection for the University of Pacific School of Psychology. President **Dave Martin** hands the ship over to **Chris Bingham** for the fall of 1984. Good luck to all graduating seniors.—**Rex Massey**

#### PENNSYLVANIA ALLEGHENY COLLEGE

Pennsylvania Delta (1879), Box 46, Allegheny College, Meadville, PA 16335. Chapter Adviser - Terence A. Giffen, 1312 Windsor House, Golfview Manor, Meadville, PA 16335. Rush Chairman - Joe Rindfuss, 646 Franklin St., Springville, NY 14141.

#### DICKINSON COLLEGE

Pennsylvania Epsilon (1880), Box 112, Dickinson College, Carlisle, PA 17013. Chapter Adviser - Robert J. Weinstein, 102 W. Plmfred St., Carlisle, PA 17013. Rush Chairmen - Bob Profy/Lou Guistini, Box 112, Dickinson College, Carlisle, PA 17013.

The Pennsylvania Epsilon chapter has continued to excel in all aspects of fraternity life. Currently, we are nominated for the Gold Star Award. Striving for the Gold Star has had the effect of bringing together the actives in search of a common goal.

Brotherhood participation at all Phi Delt functions has been superb. A fine example of this is the tremendous turnout for the Cumberland County Simulated Disaster Drill in which more than 30 brothers participated. Similarly, the Chapter Officers and Advisers Conference, held at Dickinson in early March, attracted more brotherhood interest. More importantly, however, the COAC attracted brothers from 12 other colleges and universities from the Gamma North, Gamma South, and Upsilon Provinces.

The exchanging of ideas from various chapters concerning rush, pledging, alumni relations, finances, and other topics proved very beneficial to all the participants. Just as the Gold Star has brought the Dickinson Phi Delt together in search of a common goal, so too did the COAC bring together Phis in search of a common goal—that of creating a better Phi Delta Theta for everyone involved. It is hoped that the success of this year's COAC discussions will aid the participating chapters in the years to come.

Recently, we initiated 23 Phikeias. These men show great promise to continue the strong Phi Delta Theta tradition at Dickinson. We are all confident in their ability to lead Pennsylvania Epsilon to even greater successes in the future.—**Gene Fiamma**

#### GETTYSBURG COLLEGE

Pennsylvania Beta (1875), 109 W. Lincoln Ave., Gettysburg, PA 17325. Chapter Adviser - Gary W. Karkuff, R.3, Box 3134, Etters, PA 17319. Rush Chairman - Mark Thomas, 1302 Lansdale Ave., Lansdale, PA 19446.

We, the brothers of Pennsylvania Beta chapter of Phi Delta Theta, are happy to announce that we have completed another successful year on the campus and in the community of Gettysburg. The Phis of Pa. Beta have received many awards during the

1983-84 academic year; including, for the second year in a row, the Community Service Award as given by the Interfraternity Council of Gettysburg College. Once again, the Phis collected more community service hours than any other fraternity.

Other highlights of the past year include the conclusion of a very successful rush program, from which we received eighteen diverse pledges. The brothers of Pa. Beta have also displayed their dedication to the principle of "sound learning", by receiving an award for achieving the highest grade point average of all fraternities for the fall and January terms. Phis are involved in many campus organizations, including the Student Senate, Student Activities Council, and the Student Council Review Board. Phis also represent the college as members of ten varsity sports teams.

The brothers of Pa. Beta are constantly striving to improve relations with the faculty and administration. We sponsored a faculty cocktail party on April 13 and were pleased to have nearly 40 faculty members as our guests. We also understand the importance of good alumni relations: this understanding was responsible for an extremely successful Homecoming (Nov. 4-6) with nearly 80 alumni in attendance.

The brothers are proud of the success of last fall's rush program, in which 18 acceptances out of 31 bids were received. These include: **Jim Anderson**, Middletown, N.J.; **Seth Bendian**, Teaneck, N.J.; **Bryan Cox**, Huntington, N.Y.; **Pete Graham**, Maple Shade, N.J.; **Chris Hamilton**, Hershey, Pa.; **Steve Kalis**, Pottstown, Pa.; **John Langenbach**, Camp Hill, Pa.; **Chuck Mougalian**, Wayne, N.J.; **Sean Murphy**, Sewell, N.J.; **John Murray**, Birdsboro, Pa.; **Jim Myrtetus**, Warrington, Pa.; **Matt Rockstroh**, Baltimore, Md.; **Bill Roseman**, Medford, N.J.; **Scott Shanely**, Smithtown, N.Y.; **Steve Sitek**, Paramus, N.J.; **Reid Tomlin**, Pelham, N.Y.; **Dave Trott**, Wilmette, Ill.; and **Matt Verville**, Queen's, N.Y.

To cap off a great year, the Pennsylvania Beta chapter of Phi Delta Theta has been nominated for the Silver Star Award. This award recognizes significant success in all areas of chapter operation. Pa. Beta is extremely honored by this nomination and is eagerly awaiting a decision from the General Headquarters in regard to this prestigious award.—**J. Robert McMahon**

#### LAFAYETTE COLLEGE

Pennsylvania Alpha (1873), Box 4009, College Station, Easton, PA 18042. Chapter Adviser - Stephen M. Yevak, 240 Speedwell Ave., Morristown, NJ 07960.

#### LEHIGH UNIVERSITY

Pennsylvania Eta (1876), Box F-15, Lehigh University, Bethlehem, PA 18015. Chapter Adviser - Brian J. Ascetta, 853 Cedar Hill Drive, Allentown, PA 18103. Rush Chairman - Jeffrey M. Farber, Box F-15, Lehigh University, Bethlehem, PA 18015.

#### PENNSYLVANIA STATE UNIVERSITY

Pennsylvania Theta (1904), 240 N. Burrows Rd., State College, PA 16801. Chapter Adviser - Thomas L. Smith 943 Red Gate Rd., State College, PA 16801. Rush Chairman - Dave Snyder, 240 N. Burrows Rd., State College, PA 16801.

Pennsylvania Theta at Penn State is very proud of their accomplishments of this past year with the key of their success being participation. This includes the brothers' participation in the chapter and the participation of the chapter in IFC/Panel events.

One of the reasons we are able to participate once again is the strength and spirit of



the brotherhood. The other is simply because our number has increased and continues to do so with quality men. We currently have 44 brothers, 8 pledges, and 5 men who have already accepted their bids for the fall (Penn State has no formal rush and rushes year round).

Our homecoming was a complete success where we took 7th place out of 28 in the homecoming float competition. We also serve over 225 people (actives, alumni, and their families) to a gourmet sit-down dinner by candle light in our own chapter house.

Another success of the fall semester was our first annual blood drive in conjunction with the American Red Cross. We collected over 175 pints of blood working primarily with the sororities. Next year we will be in charge of the Penn State end of the Penn State/Pitt Blood Drive. This will give us outstanding visibility among both college communities as well as national recognition in one of the largest collegiate blood drives.

In the spring, Penn. Theta continued its participation and success during Greek Week at Penn State. Teaming up with Gamma Phi Beta sorority, the chapter took an overall fifth and some first places during the IFC sponsored games and activities. This is not at all too bad a showing considering that there were 22 teams entered and this was the first year ever that the chapter has been fully participant in the Greek Week activities.

Our alumni were treated to another scrumptious meal at the chapter house during our Founder's Day Dinner. The newly formed Central Pennsylvania Alumni Club held its first annual dinner at the Penn Theta chapter house where Golden Legion Induction took place as well as the sharing of old times and the promise of future times together.

This summer the doors of the chapter house will be open especially on June 2 and July 14 when the house will be holding reunions for those who have been graduates for over 25 years and under 25 years respectively.

With 50 other fraternities at Penn State, it is very difficult to be the best, but the brothers at Penn. Theta are closing in on number one and will not be satisfied until they are the best. Of course this is not possible without the help and support from our alumni, but together we will be number one.—**Paul H. Wharton**

#### UNIVERSITY OF PENNSYLVANIA

Pennsylvania Zeta (1883), 3700 Locust St., Philadelphia, PA 19104. Chapter Adviser - Andrew T. Mesaros, Jr., 3633 Liberty Ave., Apt. 3, Pittsburgh, PA 15201. Rush Chairman - Ronald J. Pinkoski, 15 Newitt Place, Kingston, PA 18704.

For the PA Iota chapter, the 1983-84 academic year has been quite productive. We as a brotherhood have not only spoken of improvement, but we have also acted. And the result has been noticeable progress in all areas.

Both fall and winter rushes were successful. With our six brothers initiated in December, we had 31 active members this year. More recently, we initiated eight more new brothers in early April.

Along with an increased number of members over the past year, the chapter G.P.A. has also climbed. Last term, the brotherhood accumulated a 3.02 quality grade point average.

Aside from numeric improvements, physical improvements have also abounded in the chapter house. The common rooms of the house have been given a fresh coat of paint and many of the well worn and soiled carpets have been removed. Broken and missing spindles have also been replaced in the hall stairway. Brothers have also been doing improvements in their personal rooms. This summer, repair work will be done on the stained glass windows in the main hall, and the social area will be expanded and rep paneled.

When considering the traditional alumni chapter event, Homecoming, improvement is also a key word. A bountiful brunch was prepared for the alumni by the active members. After the football game was an alumni cocktail party at the chapter house. A ceremony was held at the party, and past president **Tim Ecton** (83) was presented with a gavel.

Major community service projects for this year included contributing funds to the Center for Emergency Medicine of Western Pennsylvania by entering a bed into "The Great Bed Race", and also spending a Saturday afternoon at a Boy Scout Jamboree acting as trail guides and sports referees. Brothers participated in other community service including: doing telemarketing for the "Great TV Auction" of WQED, a local public television station, telephone soliciting for Pittsburgh Public Theater, and donating blood to the Central Blood Bank of Pittsburgh.

This year, the chapter was renominated for the Gold Star Award after winning it last year. We have made considerable

improvements, and we do not plan on stopping here.—**George P. Bucha, Jr.**

#### WASHINGTON & JEFFERSON COLLEGE

Pennsylvania Gamma (1875), 241 E. Beau St., Washington, PA 15301. Chapter Adviser - Chester J. Czarnowski, 418 E. Beau St., Apt. C, Washington, PA 15301. Rush Chairman - J.L. Robeharisoa, 241 E. Beau St., Washington, PA 15301.

#### RHODE ISLAND BROWN UNIVERSITY

Rhode Island Alpha (1983), P.O. Box 1164, Brown University, Providence, R.I. 02912. Chapter Adviser - James J. Cheever, 1216 Logee St., Woonsocket, R.I. 02895. Rush Chairmen - Jim Mauze/Tom Wallace, P.O. Box 1164, Brown University, Providence, R.I. 02912.

#### SOUTH CAROLINA CLEMSON UNIVERSITY

South Carolina Gamma (1970), Box 2185, Clemson University, Clemson, SC 29632. Chapter Adviser - Arby Dickert, P.O. Box 1178, Clemson, SC 29633. Rush Chairman - William McKenzie, Box 2185, Clemson University, Clemson, SC 29632.

It has been a year full of both hard work and hard play for S.C. Gamma here at Clemson University.

With the fall of '83 came another exciting Tiger football season and that meant plenty of cookouts and social activities during the home game schedule. The highlight of the season was Homecoming, and the Phi Deltas did their fair share of work on a 60x30-foot moving float display with the theme of "Super Tiger". As a fall service project the Phi Deltas held a dance with the mentally handicapped from Whitton Village. In intrafraternity athletics, S.C. Gamma took second place in soccer.

In the spring semester the Phi Delt's had their first annual Valentine's Day semi-formal invitational event. Two spring service projects were undertaken: our annual Spring Fever Run (1,3, and 5-mile races for all who wished to enter) raised \$400 for research for ALS (Lou Gehrig's Disease), and our 48-hour teeter totter marathon with a local sorority helped raise \$300 for two Ronald McDonald Houses in South Carolina.

In IFC athletics the Phi Delt's came up with another 2nd-place showing, this time in volleyball. The year was brought to an exciting close with the Greek Week festivities, culminating with the huge Greek Day event on Saturday, April 14th. Earlier in the week the Phi Delt's won the all-fraternity Greek Sing competition, a first for S.C. Gamma.

All in all we feel we have had a very successful year, finishing 3rd on campus among fraternities in scholarship, and also showing great improvement in alumni relations throughout the year.—**Jon R. Wise**

#### UNIVERSITY OF SOUTH CAROLINA

South Carolina Beta (1882), Box 85116, U.S.C., Columbia, SC 29208. Chapter Adviser - Jerry D. Bailey, 433 Kingshead Ct., Irmo, SC 29063. Rush Chairman - William Fowler, 951 "F" Ave., Cayce, SC 29033.

This was another good year for South Carolina Beta. The chapter pledged 16 men, and of these we initiated 14.

For our philanthropy project we had the Second Annual Toys for Tots Christmas Tree Trimming Party, with admission being a new toy. This event was a success, with well over one hundred toys being contributed.

In January our chapter was voted "Chapter of the Month" by the Intrafraternity Council. Two Phi Deltas, **Bob Ladrach** and **Bill Cooper** finished first in the middle weight class and second in the heavy weight class, respectively, of the Lambda Chi Alpha Boxing Classic.

On March 31, 1984, South Carolina Beta hosted the Tri-Province Chapter Officers and Advisers Convention attended by delegates from chapters in four states. The Phi Delt "Phins" finished 4-2 in softball and made it to the first-round playoffs, where we were unfortunately eliminated.

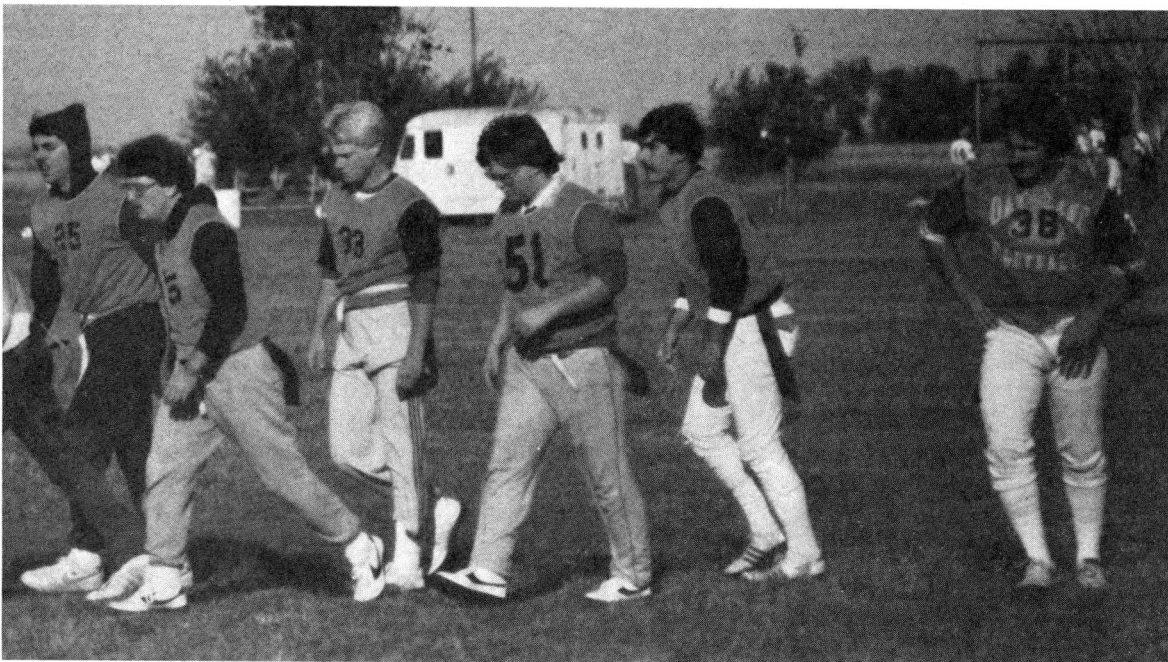
The final results are not in yet on Greek Week, but the Phi Deltas got two thirds in the Greek games and the inside word has it that we placed in the top three in the blood drive. The Phi Deltas hit the beach in the annual 'Beach Invasion', the weekend of April 21-22 and a good time was had by all. The Phi Deltas ended the year on an upbeat note with the long delayed construction of a brick cookout grill.—**Ivan Walters**

#### SOUTH DAKOTA UNIVERSITY OF SOUTH DAKOTA

South Dakota Alpha (1906), 202 E. Clark, Vermillion, SD 57069. Chapter Adviser - Edward A. Olson, Rural Route 2, Box 94, Vermillion, SD 57069. Rush Chairman - Bob Finney, 3728 165th Ave. Circle, Omaha, NE 68130.

#### TENNESSEE TENNESSEE TECH UNIVERSITY

Tennessee Delta (1969), 626 N. Walnut, Cookeville, TN 38501. Chapter Adviser - Donald L. Prince, 1245 Circle Drive, Cookeville, TN 38501. Rush Chairman - David Brown, 7021 Tyner Rn., Chattanooga, TN 37421.



**SOUTH DAKOTA ALPHA:** South Dakota Alpha's flag football team enabled the chapter to finish fourth among nine fraternities on the campus.

#### UNIVERSITY OF THE SOUTH

Tennessee Beta (1883), Box 828, U. of the South, Sewanee, TN 37375. Chapter Adviser - William T. Cocke, III, SPO Box, U. of the South, Sewanee, TN 37375. Rush Chairman - Hunter Ewing, 435 Grenock Circle, Atlanta, GA 30328.

#### UNIVERSITY OF TENNESSEE

Tennessee Gamma (1963), 1816 Melrose Ave., Knoxville, TN 37916. Chapter Adviser - Tom Hale, 1705 Cortina Cir., Knoxville, TN 37922. Rush Chairman - Gregory S. Curran, 241 E. Carmel Dr., Mobile, AL 36608.

This has been another big year for the Phi Deltas in "Big Orange Country." Tennessee Gamma celebrated its 20th Anniversary-Founder's Day on Nov. 11 and 12, fall quarter, 1983. The anniversary proved to be a very productive meeting of the alumni as the Tennessee Gamma Alumni initiated the Phi Delta Theta Alumni Scholarship Fund.

Sam Furrow, Bond Number 1 of Tennessee Gamma, originated the idea of the fund. Pledges to the fund during the 20th Anniversary exceeded \$10,000. A committee has been formed and is now studying the details of administering the investment of the fund and the proper procedure for the selection of the recipients of the scholarship.

The Big Orange Phis have set quite an example of sound learning this year. Tennessee Gamma placed first in fraternity scholarship for two consecutive quarters. **Joe Crafton**, awards chairman, has established the Phi Delta Theta Scholarship Trophy, which will be awarded annually to the fraternity with the highest grade point average.

Another reason for a big year for Tennessee Gamma was rush. Fall quarter brought 24 pledges, 22 of which were initiated. These fellows ran away with the highest pledge class grade point average on campus. Their overall GPA was above 2.8. During winter the Phi Deltas pledged another three exceptional men, each of whom was initiated.

During spring quarter the Phi Deltas at Tennessee Gamma usually do not have a pledge class, but instead concentrate more on ideas for fall rush, remodeling or repairing the house, and especially brotherhood. By the way, in a survey taken during winter quarter by the Interfraternity Council of the University of Tennessee, the Phi Deltas placed first in the category "Brotherhood".—**O. Shea Riley, III**

#### VANDERBILT UNIVERSITY

Tennessee Alpha (1876), 200 25th Ave. S., Nashville, TN 37212. Chapter Adviser - Mark Aldredge, 4308 Warner Place, Nashville, TN 37205. Rush Chairman - John Murfee, 200 25th Ave. S., Nashville, TN 37212.

#### TEXAS BAYLOR UNIVERSITY

Texas Lambda (1977), P.O. Box 223, Union Bldg., Baylor Univ., Waco, TX 76703. Chapter Adviser - William S. Live- say, 4821 Ridgeview, Waco, TX 76710. Rush Chairman - Biff McGuire, P.O. Box 223, Union Bldg., Baylor Univ., Waco, TX 76703.

The 1983-84 school year was an eventful one for the Texas Lambda Chapter at Baylor University. The new year began with the initiation of 26 Spring pledges: **Bruce Bartlett**, **Joe Bartulis**, **Tim Bisagno**, **Ken Brown**, **Jeff Cole**, **Shane Egan**, **Andy Evans**, **Ernest Freeman**, **Craig Gummelt**, **James Harper**, **Bo Holland**, **Whit Johnson**, and **Trey Jordan**.

Other new initiates are **Mike Murphy**, **Chuck Meyers**, **Lance Osley**, **Bobby Pruitt**, **Randy Rial**, **Keith Rose**, **Steve Stewart**, **Mike Taylor**, **Glen Tucker**, **Geoff Wakefield**, **Dave Waldren**, **Joey White**, and **Bryce Williams**.

The Phi Deltas received awards in the way of Honorable Mention for their Homecoming Parade Float, and first place in the

Annual Delta Gamma Anchor Splash. Our chapter ventured into a new service project in the form of a Halloween Carnival to benefit the Ronald McDonald House in Austin. We co-sponsored the Phi Delta-Delta Gamma Musical Chairs, benefitting the Lighthouse for The Blind; it was billed as Texas' largest. An exciting afternoon was also spent helping in the Waco Special Olympic games.

Highlights of the year included The Great Gloomy Gathering and our Spring retreat, both held in Dallas. Other highlights were the Bungle in the Jungle pledge dance, the annual Christmas dance, and the campus-wide pledge basketball tournament where the Phikeia team won first place.

The newly elected officers for the Fall semester are **Jeff Cutler** (85)-president; **Miles Harper** (85)-vice-president; and **Don Cadena** (85)-secretary.—**Bobby Pruitt**

#### LAMAR UNIVERSITY

Texas Iota (1965), 3903 Irving, Beaumont, TX 77705. Chapter Adviser - James M. Smith, 984 Sunmeadow Lane, Beaumont, TX 77706. Rush Chairman - Grant Stevens, 3903 Irving, Beaumont, TX 77705.

#### SOUTHERN METHODIST UNIVERSITY

Texas Delta (1922), 3072 Yale Blvd., Dallas, TX 75205. Chapter Adviser - Stephen L. Holley, P.O. Box 140340, Dallas, TX 75214. Rush Chairman - Brad Boyd, 3072 Yale Blvd, Dallas, TX 75205.

Spring semester 1984 opened in the strong tradition that has kept Texas Delta on top on the S.M.U. campus. Sound leadership, unequalled dedication and a very successful rush leaves me confident that this tradition will continue.

The semester began with Brother **Brad Boyd** and myself generating an excitement that brought us 40 of the finest pledges on campus. Pledge trainer **George Whaley** and assistants **Abby Abernathy** and **Ed Wiloughby** are guiding the new Phikeias through our recently adopted pledge program. The new program eliminated all hazing.

The Brothers are hard at work in the intramural department as our hope for an intramural title looks promising.

The 15th annual Casino Party is in late March. There seems to be no limit to the success of this party as this year's will be bigger and better than ever. Attendance is expected to be about 2,000 with proceeds benefiting the S.M.U. Scholarship Fund.

We are also proud of our leadership and involvement in campus activities. There are Brothers leading and/or members of the student senate, student foundation, Who's Who, mortar board, order of omega and several others. Fourteen brothers are presently playing varsity football. Three are on the golf team, one on the basketball team and three are cheerleaders. We have also implemented a program to make brothers and Phikeias even more aware of positions available on campus.

Texas Delta has also undertaken what I consider a very appropriate and worthwhile social service. With the help of several local volunteers we are founding a Dallas chapter of the A.L.S. Society (Lou Gehrig's disease).

In closing I would like to add that a general overview of the chapter looks good. We have all of our General Headquarters points, our receivables are low and our scholarship is improving.—**Preston Paine**

#### SOUTHWEST TEXAS STATE UNIVERSITY

Texas Mu (1980), LBJ Student Center, Southwest Texas State University, San Marcos, TX 78666. Chapter Adviser -Carol R. Burton, 104 Oakridge, San Marcos, TX 78666. Rush Chairman - Todd Windels, LBJ Student Center, Southwest Texas State University, San Marcos, TX 78666.

#### SOUTHWESTERN UNIVERSITY

Texas Gamma (1886), Box 105, Southwestern Univ., Georgetown, TX 78626. Chapter Adviser - Dr. John N. Score, Box

6200 S.W. Station, Georgetown, TX 78626. Rush Chairman - Steve Lescher, Box 105, Southwestern Univ., Georgetown, TX 78626.

#### STEPHEN F. AUSTIN STATE UNIVERSITY

Texas Eta (1962), P.O. Box 7031, SFA Station, Nacogdoches, TX 75962. Chapter Adviser - John C. Mast, Route 3, Box 1655, Nacogdoches, TX 75961. Rush Chairman - Brent Wiltshire, 8831 Roos, Houston, TX 77036.

The Texas Eta Chapter has been established at Stephen F. Austin State University since December 26, 1962. Before that they were known as the Foresters Social Club. The school is located in East Texas; in the heart of the Pine Belt and logging country.

Our chapter has worked its way out of the "slump" cycle that most chapters experience at least every six or seven years. In the fall of 1982 we had 18 actives and three pledges. The word got out to our alumni, that their chapter was in trouble and needed their guidance and support.

At Homecoming 1982, 40 Alumni rallied into Homecoming festivities. They saw that we still had the highest quality of men, but no leadership or organization. The Alumni got us organized and fired up on that weekend. They put us back into our house that we were evicted from by our housing corporation. The Alumni also formed the Texas Eta Alumni Foundation with officers in both Houston and Dallas. Their purpose was "To Foster the Continuation of Undergraduate Relationships; Preserve the Rich Tradition of the Texas Eta Chapter of Phi Delta Theta; and Give Guided Support to the Active Chapter in their Pursuits of those Traditions."

Shortly after moving back into our house, we decided that it would be in the best interest of the chapter to sell the House. We sold it and were able to retain most of our original investment.

Our do or die rush was approaching fast. We located another house and pulled together to paint and clean up our house. Rush week arrived and Brother **Bob Campbell** (chapter consultant) arrived and showed us what needed to be done, and how to go about attaining our goal of fifteen pledges. During that one week we all worked together, as never before. We acquired 14 new pledges, and were estatic with the results and quality of the Phikeias we were able to get. The Alumni put out their second newsletter. It talked up the Fraternity and Founder's Day.

On that Founder's Day we had over 50 Alumni attend, with a range of Bond numbers from thirty eight, to four hundred. This sign of true support encouraged the Chapter as well as our Alumni.

Since the Spring of 1983, the semester of sweating blood, Texas Eta has pledged 38 men who have signed the Bond. We have also relocated to another beautiful two-story Home, directly across from Campus, been awarded most improved Grade Point Average for 1983, nominated for the Silver Star improved citation, and have over 20 brothers who are attending the General Convention in June.

In the Spring of 1984 we decided to organize from top to bottom, and with these efforts we are hoping to pledge twenty men in the Fall with a deferred rush. We are also having alumni and rush parties during the summer in both Dallas and Houston. We now have over 45 actives.

Texas Eta has regained a dominant position on the campus. We finally realized that anything worth having is worth working for. The Brothers have learned to transmit the Fraternity to the Pledges and in turn we have learned to strive in all ways for the best.—**Brent D. Wiltshire**

#### TEXAS CHRISTIAN UNIVERSITY

Texas Zeta (1955), P.O. Box 29296, TCU, Ft. Worth, TX 76129. Chapter Adviser - Rodger M. Chieffalo, 800 River Plaza Tower, 1701 River Run Rd., Ft. Worth, TX 76107. Rush Chairmen - Russell Chieffalo/James Perkins, P.O. Box 29296, TCU, Ft. Worth, TX 76129.

The 1983-84 academic year was one of



success and growth for the men of Phi Delta Theta-Texas Zeta in Fort Worth. The new initiates numbering 21 increased the brotherhood membership to 84. This new addition to our chapter promises nothing but success for the future of Texas Zeta.

Texas Zeta is proud to inform you that **Thane DeWeese**, a brother in this chapter has received the Harold P. Brown Fellow Scholarship Award from the Washington University at St. Louis, MO. At the end of this academic year **Thane** will have obtained a chemistry degree from TCU. He will be enrolling in the Engineering School at Washington University in the fall of '84. Texas Zeta wishes **Thane** the best of luck.

The members of Texas Zeta provided many services to the community during the past semester. Some of the services included maintenance work for shelter homes for needy families. We also held fund raisers which produced funds for both the American Heart and Cancer Associations.

The newly elected officers for the fall of 1984 are **Cole Abbott**, president; **Tim Hoch**, vice president; **Bruce Focht**, treasurer and **Kirk Bond**, secretary.

The brothers of Texas Zeta would like to take this opportunity to express our best wishes to the graduating seniors of our chapter as well as to all the brothers of Phi Delta Theta.—**Kirk Bond**

#### TEXAS TECH UNIVERSITY

Texas Epsilon (1953), Box 4022, Tech Sta., Lubbock, TX 79409. Rush Chairman - **Moody Alexander**, Box 4022, Tech Sta., Lubbock, TX 79409.

Another addition to our continuously changing rush system this year occurred in the last week of March with the implementation by our IFC of a "Dry Rush".

Last year, the IFC passed a bill which mandated a system that did away with deferred rush and allowed fraternities to pledge incoming freshmen in the fall. Well, this fall, those "illegal" freshmen will be going through rush in a "legal" frame of mind. The chapter supported this bill that was drawn up by IFC Rush Chairman, **Stuart Miller** and later passed under the stern gavel of the IFC President **Dan Pope**. The chapter was pleased with the passing of the "Dry Rush" system and we feel we can benefit greatly by the new rush addition. One point that should be mentioned is that the IFC voted almost unanimously with the way Phi Delt representatives voted, and the influence Phi Delt has in the IFC on this issue is a direct result of **Stuart** and **Dan** who both are Phis and represent the IFC very well.

The chapter pledged 32 men this fall after giving 38 bids. Eleven of those deplored and everyone made his grades. Twenty-one were initiated.

They include, **Bryan Ashford**, **Drew Sinquefield**, **Richardson**; **Jay Beene**, **Tom Hughes**, **Dallas**; **Tim Brierty**, **Amarillo**; **Randy Carmen**, **Greg Dement**, **Paul Gashen**, **Jimmie Hilton**, **Randy Parrish**, **Lubbock**; **John Davidson**, **Mike Reed**, **Ft. Worth**; **Gary Dunker**, **San Antonio**; **Scott Head**, **Grand Prairie**; **John Heard**, **Midland**; **Brad Lynch**, **Houston**; **Nathan Nash**, **Sherman**; **Vick Pope**, **Temple**; **Scott Stockton**, **Wolfforth**; **Lanny Wilkinson**, **Canyon**; **Mike Williamson**, **Arlington**.

Spring also went well with 27 bids accepted out of 28 being given. The pledge class consists of **David Apple**, **Rawls**; **Shane Awalt**, **Norman McLeod**, **Abilene**; **Don Barbo**, **McKinney**; **Len Bridgeman**, **Rob Watson**, **Midland**; **Carman Campagna**, **Montana**; **Rob Cyprus**, **El Paso**; **Kevin Dennis**, **Lubbock**; **Karl Hittle**, **Gil Jenkins**, **Wade McKassom**, **Dallas**; **Larry Kelly**, **Jack McJunkin**, **Richardson**; **Robert Lark**, **Clovis**, **N.M.**; **Nic Liethen**, **Farwell**; **Morris Nelson**, **McAllen**; **David O'Keefe**, **Houston**; **Scott Phelan**, **Levelland**; **Beau Rolfe**, **Plano**; **John Ruggles**, **Burkburnett**; **Byron Tap**, **Quanah**; **Jay Wester**, **Irving**; **Scott Wright**, **Wheeler**.

The chapter was ranked 4th among the 21 IFC fraternities for the fall semester with a GPA of 2.46. **Scott Milton** received the Roy T. Grimes Scholarship given to the graduating senior with the highest grades. **Scott** had a 3.443. **Chris Taylor** headed up the chapter's scholarship program in the fall and **Alan Harp** concluded in the spring.

We again finished second to the Pikes in competition for the intramural blanket. In football, both A and B teams won second place in their divisions but both lost in the play-offs. In volleyball, the A team didn't place in their division but the B team won All-Greek. The same pattern continued in basketball as in football but our soccer team managed to achieve a second place finish in their division and went on to win All-Greek and All-Univ. competitions. Golf and tennis were also added to the blanket for points this semester and we dominated both areas. (Note: IFC Intramural Chairman is Phi Delt **Spencer Hayes**). Both A and B softball teams finished in a lower than usual ranking in their division with early losses. These losses caused us to come up short once more in the blanket point race that ran down to the wire, but once again, no cigar.

Over the week of April 2-7, we won the All-Greek Week competition with events including mud volleyball, frisbee football, swimming events, and the Greek Talent Show which was won by Phi **Moody Alexander**. This is the second year for Greek Week to be held at Tech and the Phi Delt has dominated the event both years.

Phi Delt made a clean sweep in campus government this year with the election of brother **Jim Noble** to the office of Texas Tech Student Association President. For us, this seemed to just be a spark of energy because every Phi Delt involved in the election process was elected. **Spencer Hayes** was elected Senator-at-Large; **Brent McCarty**, **Jim Bridgeman** and **Devin Zakzewski** were all elected as senators of the College of Business.

Phi playing varsity football were **Chuck Alexander**, **Pat Hrcncir**, and **Brian Brock**. **Chuck** was an Academic All-American and also received the Iron Man Award which is given to the most outstanding male, Greek or non-Greek, on the Tech campus. **Phikeia David O'Keefe** also is a member of the Tech lineup.

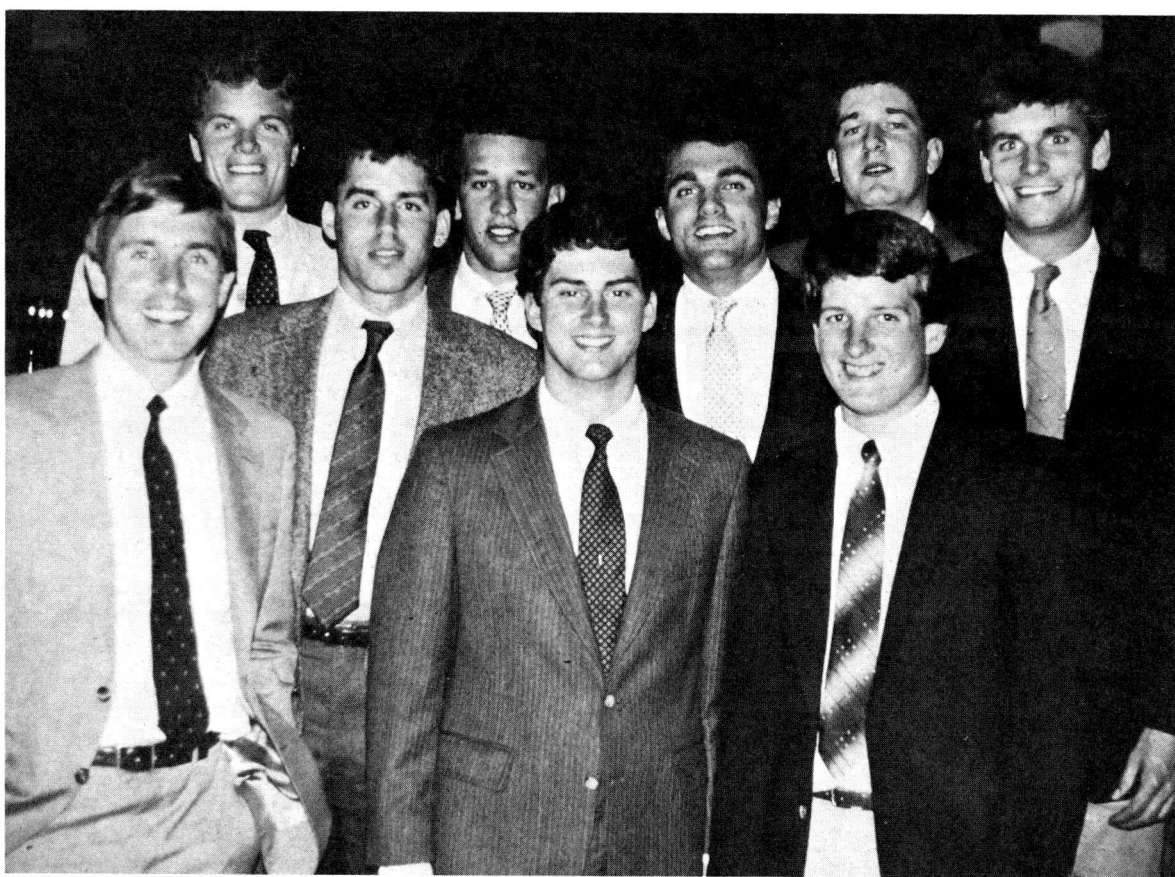
In the area of baseball, we had **Dale Redman**, **Greg Landry**, and **Mike Reed**. These Phis are all starters on the team and are all having a promising season under the direction of head coach, **Phi Gary Ashby**.

We also have **Phikeia Larry Kelly** playing Tech basketball.

The chapter won the General Fraternity's Binner Religious Life Award for 1982-82, 82-83, and continues an active program of spiritual life headed by **Brett Hilliard** in the fall and **Ben Pollard** in the spring. The program consists of small group discipleships, Bible studies, chapter church activities and testimonials during chapter meetings. The chapter is consistently strong in the area of religious life and will have an excellent chance for the Religious Life Award to be given this summer in New Orleans at the Phi Delta Theta convention.

**John Minter** was in charge of our community service this year. **John** involved the chapter in such community services as Meals-On-Wheels, blood drives with sororities, Big Brother-Little Brothers of Lubbock, March of Dimes, and the list continues. The Phikeias also were involved in community service with many weekend car washes to help raise money for the needy.

This past fall, the annual Phi Delt/KA Calf Fry Rodeo was a success in not only fun but more importantly in "dollars." The rodeo was spearheaded by Phi Delt **Chris Taylor** and **Greg Gilbert**, and for the first time we turned a well-earned profit for both our chapter, Kappa Alpha order, and Muscular Dystrophy. This event is always



**TEXAS EPSILON:** The Phi Delt presence was very much in evidence at Texas Tech's Order of Omega banquet. In the front row are Dr. Ed Whipple, associate dean of students; Chris Taylor, chapter vice president; Spencer Hayes, IFC intramural chairman; and Stuart Miller, IFC rush chairman. In the back are Chuck Alexander, winner of the IFC "Iron Man" award given to the most outstanding male student at Tech; Dan Pope, president of IFC; Steve Roper, fall president; Eddie Broussard, spring president; and Moody Alexander newly appointed rush chairman.

a lot of fun, and when a profit is earned after already entering a loss in your yearly budget before the event even begins, was a welcomed surprise. The total surprise was \$5,800.00.

The chapter was under the strong leadership of Fall President **Steve Roper**, Vice President, **Frank Fallon**, Treasurer **Eddie Broussard**, Rush Chairman **Dan Pope**, and Pledge Trainer **Kelly Snook**. In the spring, the officers were President **Eddie Broussard**, Vice President **Chris Taylor**, Treasurer **Chris Abston**, Rush Chairman **Dan Pope**, and Pledge Trainer **Chuck Alexander**.

**Ben Pollard** has been elected president for next fall and **Stuart Miller** has been elected vice president.—**Chris Taylor**

#### UNIVERSITY OF TEXAS - AUSTIN

Texas Beta (1883), 2300 Nueces, Austin, TX 78705. Chapter Adviser - **George K. Meriwether**, 1624 Northumberland Rd., Austin, TX 78703. Rush Chairman - **Mike Moore**, 2300 Nueces, Austin, TX 78705.

#### UNIVERSITY OF TEXAS - ARLINGTON

Texas Kappa (1968), P.O. Box 194788, Arlington, TX 76010. Chapter Adviser - **Roy L. Anderson**, 2310-A Hollandale Circle, Arlington, TX 76010. Rush Chairman - **Ronnie Medaris**, 300 S. College St., Arlington, TX 76010.

The 1983 Fall semester began with a successful rush for Texas Kappa. The following men were pledged: **Robert Aldridge**, **Doug Anderson**, **Kenny Blevins**, **Mike Bond**, **Jimmie Carter**, **Doug Clark**, **Craig Cooper**, **Leon DeLeon**, **Rueben DeLeon**, **Richard Dotson**, **Jimmie Duffie**, **Mike Foster**, **Mark Goodenough**, **Dan Hamilton**, **Robert Hattox**, **Mike Jensen**, **Layton Lang**, **Mark Mauser**, **Ed McCoy**, **Tony Methvin**, **Jeff O'Brian**, **Joel Sanders**, **Kip Shaw**, **Mike Thomas**, **Steve Voelker**, **Klip Weaver**, **Robin Williams** and **Jamie Wright**. The fall '83 Phikeias planned and carried out the 19th Annual Phi Delta Theta Winter Olympics.

In October the Chapter hosted a reception for the alumni after the Homecoming game. The Fall formal was held in November in the Crystal Palace Ballroom at the Flagship Inn in Arlington with over 200 actives, alumni and their dates in attendance.

In January the annual alumni-sponsored New Year's Eve Social was a great success. The event was attended by actives and alumni alike. The Chapter appreciates the good job the Arlington Alumni Club is doing.

The initiation banquet for fall pledges was held at Homestead Bar-B-Q Restaurant on the night before the spring semester began. That gathering started the new semester on a positive note and the new brothers were instrumental in having an outstanding rush in Spring '84.

The following men were pledged in the Spring: **David Assid**, **Mike Barnes**, **Todd Bartz**, **Allen Boyer**, **Tommy Bradford**, **Mark Harris**, **Kyle Jeffries**, **Todd Kutcher**, **Robbie McAlister**, **Vic McLeod**, **Ron Morañ**, **Robert Ravel**, **Wade Schnieder** and **Jason Watson**.

Once again, Phi Delta Theta has won the Fraternity All-Sports Trophy in intramurals for 1983-84. Texas Kappa is proud of the leadership provided this year by **Mark LaCourse**, fall president; **Bart Thompson**, spring president; **Greg Boggon**, vice-president; **Clay Workman**, treasurer; **Jimmy Nugent**, fall pledge trainer; and **Paul Clark**, spring pledge trainer.—**Mike Thomas**

#### WEST TEXAS STATE UNIVERSITY

Texas Theta (1964), Box 1848, West Texas Sta., Canyon, TX 79016. Chapter Adviser - **Frank Heflin**, 5318 Randolph, Amarillo, TX 79106. Rush Chairman - **Britt Smith**, Box 1848, West Texas Sta., Canyon, TX 79016.

#### UTAH UNIVERSITY OF UTAH

Utah Alpha (1914), 85 S. Wolcott, Salt Lake City, UT 84102. Chapter Adviser - **Thomas N. Arnett, Jr.**, 900 Newhouse Bldg., 10 Exchange Place, Salt Lake City, UT 84111. Rush Chairman - **Todd Hattori**, 85 S. Wolcott, Salt Lake City, UT 84102.

Utah Alpha has initiated 22 men since June 1983.

They are the following individuals: **Peter Dreissig**, **Juneau, AK.**; **Jay Gratchner**, **Anandale, VA.**; **Simarjit Gill**, **S.L.C., UT.**; **Todd Lee**, **Helper, UT.**; **Chris Trollan**, **Juneau, AK.**; **Chad Corriveau**, **Riverside CA.**; **James Kleimeyer**, **S.L.C., UT.**; **Carl Mergele**, **Denver, CO.**; **David Bishop**, **Tonawanda, N.Y.**; **Mark Holding**, **S.L.C., UT.**; **Brian Taylor**, **Houston, TX.**; **Eric Anderlini**, **Kentfield, Ca.**; **Chuck Dalebout**, **Great Falls, VA.**; **Patrick Sheehan**, **Pleasant Grove, UT.**; **Evan Rabin**, **Baldwin, N.Y.**; **Sam Martin**, **Newport, CA.**; **Michael Rogers**, **Doylestown, PA.**; **Shawn Whitaker**, **Stamford, CN.**; **Chris Rogers**, **Cheshire, CN.**; **Mark Jensen**, **James Moler**, **S.L.C., UT.**

Several Utah Phis are involved with student government. They include: **Carl Mergele**, Chairman, Student Services Board; **Mike Prokopis**, Special Projects Officer, Academic Affairs Board; **Todd Hattori**, newly appointed Executive Assistant to the Vice President of the Associated Students of the University of Utah. **Mike Eger** is a member of the Ballet Student Advisory Committee as is **Ken Maikowski** in the College of Nursing.

Four members are active in the ROTC at the University of Utah. They include: **Tom McKeivitt**, **Patrick Sheehan**, **Bill Steers**, and **Michael Prokopis**. **McKeivitt** and **Sheehan** will be commissioned as 2nd Lts. in the US Army this June. **Steers** will be commissioned as a 2nd Lt. in the US.

Air Force. **Prokopis** is a midshipman 4th class in the Navy ROTC. **Patrick Sheehan** was a member of the University of Utah Army ROTC Ranger Team which won the 4th region Ranger Challenge for 1984.

**Ken Maikowski** was re-elected as treasurer of Interfraternity Council and **Jay Gratchner** was elected vice-president. **Maikowski** is on the Baccalaureate Admissions and Advancement Committee of the College of Nursing. He is also a special minister and Eucharistic minister at the Newman Center, the Catholic center on campus. He also recently passed the Emergency Medical Technician course.

**Mike Eger** has performed throughout the intermountain region with the Utah Ballet and Jazzin Dance Company.

Bee's Motorcycle Club of Salt Lake City will put on the 21st annual Widowmaker Hill Climb in the most prestigious and roughest hill climb in the world. Utah Alpha Phis who are members of the club are **Lindy Carlton**, **Scott Evans**, **Billy Steers**, **Steve Padrick** and **Rob Byrnes**.

**Steve Padrick** was chosen Rally "Man of the Year" at Utah Alpha, for the second year in a row. **Mark S. Cianciolo** was honored with the Weston L. Harris Award for highest scholastic standing at Utah Alpha. The "Phi of the Year" award of Utah Alpha went to **M. Scott Mietchen**, who was selected to be one of the international fraternity's chapter consultants.

Utah Alpha honored its Alumni at their annual Founder's Day Formal Dance on April 14, 1984 in Salt Lake City. Judge **David E. Roth** (Utah '66) was selected by the chapter to receive the Edward J. Whitney (Utah '47) local "Alumnus of the Year Award."

The Brothers of Utah Alpha are very proud of their achievements and outside involvements. We are looking forward to another great year, and wish our fellow Brothers the best of luck!—**Derek S. Goldstein**

#### VERMONT

#### UNIVERSITY OF VERMONT

Vermont Alpha (1879), 439 College St., Burlington, VT 05401. Chapter Adviser - **Robert R. Boehringer, Jr.**, 84 Hardy Ave., Burlington, VT 05401. Rush Chairman - **Richard Vandell**, 439 College St., Burlington, VT 05401.

This past year at Vermont Alpha has been a good one for us, many things were done and a significant attitude change has taken place. Some of the more outstanding events are mentioned here.

The Alumni Donation Fund is going well. The money donated by the Alumni plus a \$25,000 loan enabled us to do some much needed repairs and renovations. During the summer break last year the house was closed so that the renovations could be done. The main bath room received most of the work, the showers being totally renovated and all new fixtures were installed. The house was also weatherized by installing storm windows and replacing windows in the attic. A new back door was installed that can be locked to improve security. The remaining funds were put into cleaning, painting and general restoration of the house to its former grandeur.

**Doug Krapcho**, last semester's secretary and Interfraternity Council representative, has been elected IFC President.

**Charles Abry** and **David White** were entered into the College of Agricultural honor society Alpha Zeta.

The spring semester GPA moved up six places to seventh among fraternities on campus.

**Tom Nolting**, Vice President, is assistant coach for the South Burlington High School track team and **Kevin Bushweller**, athletics chairman, is assistant coach for



**TEXAS ETA:** Brothers and friends gather in front of the Texas Eta chapter house at Stephen F. Austin.



Rice High School hockey team (both schools are local). **Bushweller** is also summer sports editor for the *Cynic*, the school paper.

The intramural sports are going very well this year. We have undefeated teams in basketball, indoor and fall soccer, street hockey, and softball.

Our rush program this spring saw a threefold increase in the pledge class size over the fall semester. The pledges, initiated recently, brought the total number of Brothers at Vermont Alpha to 36.—**David Flad**

**VIRGINIA RANDOLPH-MACON COLLEGE**

Virginia Gamma (1874), P.O. Box 1347, Ashland, VA 23005. Chapter Adviser - James W. Buchanan, 1509 Americana Dr., Richmond, VA 23228. Rush Chairman - Dave Wright, Box 1347, Randolph-Macon Ashland, VA 23005.

The Va. Gamma Chapter has had a great spring with many activities involved. The chapter completed a very successful rush program as we recruited 16 new pledges. The chapter is the largest on the Randolph-Macon campus with fifty brothers.

Va. Gamma also celebrated its 110th anniversary and we held an American Gold Legion ceremony for those Phis who have been brothers fifty years or more, on April 7, 8, and 9. Our fraternity looks forward to another good fall of 1984 and will remain a top fraternity on campus.

**UNIVERSITY OF RICHMOND**

Virginia Delta (1875), Box 57, Univ. of Richmond, Richmond, VA 23173. Chapter Adviser - D. Scott Sagester, 1523-H Split Oak Lane, Richmond, VA 23229. Rush Chairman - Todd Monahan, 900 Riverton Rd., Moorestown, NJ 08057.

The Virginia Delta chapter of Phi Delta Theta at the University of Richmond extended 25 bids this year. Bids were extended to four sophomores and 21 freshmen. Twenty-three of these bids were accepted. We initiated these individuals as pledges on Sept. 28 and they became new brothers on Feb. 12.

New officers were elected in March. The officers are: **Paul Mazeski**, president; **Mark Sylvester**, vice-president; **Steven Hall**, treasurer; **John Voigt**, pledge trainer; **Andrew Yeomans**, warden; **Doug Swope**, alumni-secretary; **Robert Connor**, social chairman; and **Delancey Davis** as our secretary. These new officers are very enthusiastic about Phi Delta Theta, and we are all looking forward to a fine year ahead.

At this point, we are working on a lodge improvement project that will be in process this summer and completed in the early fall.—**Paul S. Mazeski**

**UNIVERSITY OF VIRGINIA**

Virginia Beta (1873), 1 University Circle, Charlottesville, VA 22903. Chapter Adviser - Robert L. Humphrey, Box 216-A, Rt. 1, Charlottesville, VA 22901. Rush Chairman - Lawrence Weinberg, 1 University Circle, Charlottesville, VA 22903.

Once again Phi Delta Theta had another outstanding year here at the University of Virginia. Our year began with rush, where our chapter did quite well by having 18 bids returned out of 19 given, our most successful effort to date.

In November, our chapter celebrated its 110th anniversary in style as we had a formal reception for all the alumni and their wives on Homecoming weekend.

The semester ended with a Christmas party for the children in our neighborhood, as Santa Claus made his annual visit to the area.

Throughout the year, we have competed vigorously in fraternity intramural sports and once again we are in the running for the high-point championship. With regard to Scholarship this year, we had some faculty members come to our house for dinner, and speak afterwards on common academic concerns. The topics were stimulating and thought-provoking for all. Our pledge program was quite successful in installing the values of Phi Delta Theta. The pledges have weekly tests and were responsible for a fundraising project and a community service project in addition to their other duties. Finally our year ended with our spring clean-up where we cleaned the house and with the help of our chapter adviser made plans for renovations in the summer. In summary, it has been a truly rewarding year for the members of Virginia Beta.—**Thomas S. Wilby**

**VIRGINIA POLYTECHNIC INSTITUTE**

Virginia Eta (1972), 620 N. Main St., Blacksburg, VA 24060. Chapter Adviser - Jeffrey M. Miner, 8600 I Foxridge Ave., Blacksburg, VA 24060. Rush Chairman - Frank Wohlford, R.#1, Dungannon, VA 24245.

As we approach the end of this academic year, Virginia Eta has continued to strengthen and grow. Our new house on Main Street, right across from the campus of Virginia Tech, has been quite an asset to us. It has made us much more visible to the community and to the students.

Our rush this last year has been very successful, as we have initiated 33 new brothers and we are presently pledging seven.

Our community involvement has been immense. We frequently conduct community service projects such as aluminum can and canned food drives, and we help local underprivileged families with household repairs and chores.

The IFC at Tech is growing tremendously. Virginia Tech has begun a Greek Row where presently two fraternities and one sorority live. Phi Deltis continue to hold IFC executive positions. This past year a brother served as secretary, and recently, three brothers have been elected to serve as treasurer, rush chairman, and scholarship chairman for the 1984-85 academic year.

Last year Virginia Eta received the Most Improved Chapter Award. This year, we have been nominated for the Gold Star Award, which we stand a very good chance of obtaining. We are also in the running for most improved chapter on campus. All in all it has been a fantastic year for Phi Delta Theta at Virginia Tech.

**WASHINGTON & LEE UNIVERSITY**

Virginia Zeta (1887), 5 Henry St., Lexington, VA 24450. Chapter Adviser - Dr. Thomas Imeson, Chemistry Dept., W & L Univ., Lexington, VA 24450. Rush Chairman -

**WASHINGTON UNIVERSITY OF PUGET SOUND**

Washington Delta (1952), 1309 N. Washington, Tacoma, WA 98406. Chapter Adviser - James F. Dart, 1309 N. Washington, Tacoma, WA 98406. Rush Chairman -Craig Matheson, 1822 SW 56th, Seattle, WA 98166.

The men of Washington Delta have experienced possibly the greatest year in the history of this chapter. We pledged a total of 30 new members in our fall and spring terms. This is the largest number of pledges of all the fraternities on campus.

We have 29 varsity athletes that compete in 8 different sports. This large number of athletes are headed by two time *All-American* swimmer **Trevor Jones**, *All-Phi* senior defensive end **Joe Rubble**, *All-Phi* senior cornerback **Darrin Smith**, and five of the top six tennis players.

In intramural competition, the Phi Deltis showed great unity and desire by taking three championships and advancing to finals in most sports.

The Phi Deltis of Washington Delta are not limited to athletics, however. Senior **John Pilcher** has just ended his term as ASUPS president and sophomore Phikeia **Stan Sorensen** just started to establish his leadership abilities as he has been elected to student senate. Junior **Garth Pearson** is also currently serving as IFC Treasurer.

This chapter has been rising rapidly as shown by our improvement award in 1983 and our silver star nomination for this year of 1984; and under the leadership of junior President **Ron Smith**, sophomore Vice-President **Brian Webster**, and Sophomore Scholarship Chairman **Randy Williams**, we believe that we will continue our advancement.—**James Johnson**

**UNIVERSITY OF WASHINGTON**

Washington Alpha (1900), 2111 N.E. 47th, Seattle, WA 98105. Chapter Adviser - John F. Vynne, 9057 NE 1st Ave., Bellevue, WA 98004. Rush Chairmen - Kevin Cummins/-John Roselli, 2111 N.E. 47th, Seattle, WA 98105.

Another school year has come to close and it has been a very special year for Washington Alpha. We thank the Senior class for the years of involvement in the house and wish them luck in pursuit of their career goals. We are proud to announce the initiation of 28 Phikeias this past spring.

Washington Alpha continues to pledge funds and donate hundreds of volunteer hours to the Special Olympics Dance Marathon. This event raised over \$60,000 this year for the Special Olympics.

Washington Alpha is grateful for the Gold Star and Paul Beam Trophy awarded this past year. The years of efforts of many Washington Phis are commendable and we are confident we are worthy of these high honors.

Washington Phis continue to compete in varsity athletics including football, basketball and tennis. Husky football looks forward to this fall season attempting to achieve its seventh consecutive Bowl appearance. We congratulate Brother **Schrempf** and the purple and gold cagers for advancing to the quarter finals of the NCAA Tournament this spring.

Washington Alpha sent five representa-

tives, ranging in all classes, to the Annual Chapter Officers and Advisers Conference in Eugene, Oregon. Chapter leaders as well as underclassmen had a productive week-end exchanging information and developing new innovative ideas with representatives of other chapters.

We are looking forward to another outstanding rush season, sustaining quality and success in achieving our rush goals. If any Phis know of any rushees that will be attending the University of Washington, please contact our newly elected Rush Chairmen: **John Roseli** or **Kevin Cummings**—**Richard A. Hepler**

**WASHINGTON STATE UNIVERSITY**

Washington Gamma (1918), 515 N.E. Colorado Ave., Pullman, WA 99163. Chapter Adviser - Ken Myklebust, S.E. 305 Camino, Pullman, WA 99163. Rush Chairman - Corey Jones, 515 N.E. Colorado Ave., Pullman, WA 99163.

**WHITMAN COLLEGE**

Washington Beta (1914), 715 Estrella, Walla Walla, WA 99362. Chapter Adviser -Jim McCarthy, 1771 Home, Walla Walla, WA 99362. Rush Chairman - Jeff McQueen, 715 Estrella, Walla Walla, WA 99362.

**WEST VIRGINIA WEST VIRGINIA UNIVERSITY**

West Virginia Alpha (1926), 206 Belmar Ave., Morgantown, WV 26505. Chapter Adviser - Graham B. Brown, Jr., R.2, Box 149, Rivesville, WV 26588. Rush Chairman - John Machesney, 719 Churchill, Charleston, WV 25314.

**WISCONSIN LAWRENCE UNIVERSITY**

Wisconsin Beta (1859), 711 E. Alton St., Appleton, WI 54911. Chapter Adviser - Michael C. Breitzman, 2003 N. Racine Ave., Appleton, WI 54911. Rush Chairman - Ted Malkowski, R.#5, Appleton, WI 54915.

**RIPON COLLEGE**

Wisconsin Gamma (1960), 224 Mapes Hall, Ripon College, Ripon, WI 54971. Chapter Adviser - R. Norton Krauss, 412 John St., Ripon, WI 54971. Rush Chairman - Dave Plant, 224 Mapes Hall, Ripon College, Ripon, WI 54971.

**UNIVERSITY OF WISCONSIN**

Wisconsin Alpha (1857), 614 Langdon St., Madison, WI 53703. Chapter Adviser - Michael Ash, 415 Fitch Ct., Apt. C, Madison, WI 53715. Rush Chairman - Stan Schneider, Box 414, Okoboji, IA 51355.

The 1983-84 school year got off to a great start for Wisconsin Alpha. Working with Alpha Chi Omega, we enjoyed a second place finish in the Homecoming competition, including a first place finish in the float event.

We are all very proud of our fifth consecutive Gold Star Award, runners-up for the Binger Religious Life Award, and a citation for Community Service.

Wisconsin Alpha also held two separate philanthropies, the "Challenge Triathlon", and the "Madison Cross Country Ski Classic", to benefit the Epilepsy Center of Dane County. In the spring, we tried something new by lending our time and efforts in painting a house for the elderly in the Project Homes program.

In terms of campus activities, we were

also very active. Teaming with Kappa Kappa Gamma, we participated in Humology, an all-campus variety show. Several active members helped celebrate Founders Day with the Milwaukee Alumni Club at the University Club in Milwaukee. Finally, to round off the year, several car loads of Wisconsin Alpha Phis made the trip down to New Orleans to attend the General Convention—**Stuart C. Hall, Jr.**

**WYOMING UNIVERSITY OF WYOMING**

Wyoming Alpha (1934), Fraternity Row, U. of Wyoming, Laramie, WY 82070. Chapter Adviser - Dennis Jespersion, 415 S. 16th St., Laramie, WY 82070. Rush Chairman - James D. Coleman, Rt. 62c, Box 83, Lander, WY 82520.

**COLONIES INDIANA UNIVERSITY OF PENNSYLVANIA**

Pennsylvania Lambda Colony, 1243 Oakland Ave., Indiana, PA 15701. Colony Adviser - Dino Bello, 1201 Braun Road, Bethel Park, PA 15102. Rush Chairman - Chris Jones, 20 Conway Drive, Mechanicsburg, PA 17055.

**UNIVERSITY OF SOUTHWESTERN LOUISIANA**

Louisiana Gamma Colony, 509 E. University, Lafayette, LA 70503. Colony Adviser -Byron DuBois, 1125 W. Main St., New Liberia, LA 70560. Rush Chairman -Kenny Vesper, 509 E. University, Lafayette, LA 70503.

It gives me great pleasure, as historian, to inform the Scroll of Phi Delta Theta that our colony, Louisiana Gamma of the University of Southwestern Louisiana, was recently awarded a scholastic achievement award. It was presented to us for the outstanding Fraternity Pledge Class of 1984.

I believe this is truly something that we, as a young preserving colony, can be especially proud of. We are one of eighteen fraternities here at USL. Even though we are the only colony on campus, we are making a name for ourselves that you as Phi Delta Theta can be proud of.

Our university also sponsors an annual parade in conjunction with "Mardi Gras," which is a traditional part of our customs and heritage here in south Louisiana. This parade entitled "The Krewe od Roux" was held March 1, 1984 and was open to all fraternity and sorority chapters on campus. Once more it gives great pleasure to pat our colony on the back by informing you that we were awarded two first place entries. These awards were "Most colorful float entry" and "Most Original float entry."—**Tim Gossen**

**UNIVERSITY OF WISCONSIN - EAU CLAIRE**

Wisconsin Delta Colony, 1132 State St., Eau Claire, WI 54701. Colony Adviser - George Choksy, 330 Hudson, Eau Claire, WI 54701. Rush Chairman - Tim Jacobs, 1132 State St., Eau Claire, WI 54701.

**ROCHESTER INSTITUTE OF TECHNOLOGY**

New York Eta Colony, Box 1038, 25 Andrews Memorial Drive, Rochester Institute of Technology, Rochester, NY 14623. Colony Adviser - Pete Sarrator, Registrars Office, Rochester Institute of Technology, Rochester, NY 14623.

# Directory Questionnaire To Be Mailed in August

All Phi Delt alumni should be receiving a request in August for the essential information required to assure complete data in the new alumni directory.

The questionnaire will be brief, but it is essential that all alumni complete it and return it. This will insure that information in the directory will be current and complete.

A follow-up mailing will be done approximately one month after the initial mailing. The completed questionnaires as well as a list of all alumni who do not respond to either mailing will be turned over to the publisher for telephone follow up.

Publication of the directory will be handled by Harris Publishing Company of White Plains, New York. This company is the sole authorized agent for the production and marketing of the directory, and assumes all financial obligation, including the compilation, editing, billing and distribution of the volume and will cover its costs through individual book sales to alumni

only. This plan will assure the publication of a professionally compiled volume.

The directory will list alumni alphabetically with each entry to indicate name, class, chapter, address, and will include home telephone, and business or professional information with address, and telephone. Two complete indexes, one arranged geographically by towns within states, and the other, special listing of alumni by chapter, will follow the alphabetical division.

Alumni who have not returned their questionnaires and are not reached by telephone by the Harris firm will be listed in the directory with the address, if current, provided by alumni records. If you have not received your questionnaire or you do not wish to appear in the directory, please notify Rusty Richardson, Director of Alumni Services, in writing at Box 151, Oxford, OH 45056.

Release of the directory is currently scheduled for late spring, 1985.

## RUSH RECOMMENDATION DATA SHEET

Rushee's Name \_\_\_\_\_

Home \_\_\_\_\_ Phone \_\_\_\_\_

\_\_\_\_\_ Zip \_\_\_\_\_

Parents' Name \_\_\_\_\_

Scholarship Information \_\_\_\_\_

Honors, awards, etc. \_\_\_\_\_

\_\_\_\_\_

\_\_\_\_\_

\_\_\_\_\_

Organizations \_\_\_\_\_

\_\_\_\_\_

\_\_\_\_\_

\_\_\_\_\_

Other Activities \_\_\_\_\_

\_\_\_\_\_

\_\_\_\_\_

\_\_\_\_\_

Recommended by \_\_\_\_\_ Chapter, year \_\_\_\_\_

Address \_\_\_\_\_ Phone \_\_\_\_\_

\_\_\_\_\_ Zip \_\_\_\_\_

Clip this form out and mail it to the rush chairman of the appropriate chapter. Consult chapter listing for address.